

SPATA2 Polyclonal antibody

Catalog Number: 11000-1-AP

Basic Information

Catalog Number:

11000-1-AP

Size:

750 µg/ml

Source:

Rabbit

Isotype:

IgG

Immunogen Catalog Number:

AG1432

GenBank Accession Number:

BC009481

GeneID (NCBI):

9825

UNIPROT ID:

Q9UM82

Full Name:

spermatogenesis associated 2

Calculated MW:

58 kDa

Observed MW:

60 kDa

Purification Method:

Antigen affinity purification

Recommended Dilutions:

WB 1:500-1:1000

IHC 1:20-1:200

Applications

Tested Applications:

IHC, WB, ELISA

Species Specificity:

human, mouse, rat

Note-IHC: suggested antigen retrieval with **TE buffer pH 9.0; (*)** Alternatively, antigen retrieval may be performed with **citrate buffer pH 6.0**

Positive Controls:

WB : human lung tissue,

IHC : human prostate cancer tissue, mouse lung tissue

Background Information

Storage

Storage:

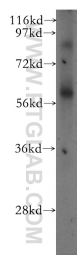
Store at -20°C. Stable for one year after shipment.

Storage Buffer:

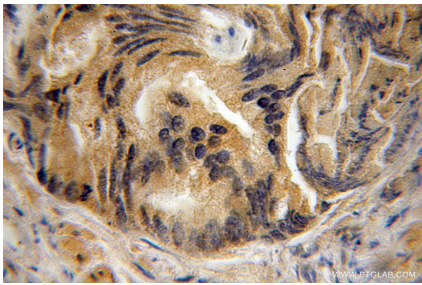
PBS with 0.02% sodium azide and 50% glycerol pH 7.3.

Aliquoting is unnecessary for -20°C storage

Selected Validation Data



human lung tissue were subjected to SDS PAGE followed by western blot with 11000-1-AP (SPATA2 antibody) at dilution of 1:800 incubated at room temperature for 1.5 hours.



Immunohistochemical analysis of paraffin-embedded human prostate cancer using 11000-1-AP (SPATA2 antibody) at dilution of 1:100 (under 10x lens).