

For Research Use Only

SMARCD1 Polyclonal antibody

Catalog Number: 10998-2-AP

Featured Product

9 Publications



Basic Information

Catalog Number:

10998-2-AP

Size:

433 µg/ml

Source:

Rabbit

Isotype:

IgG

Immunogen Catalog Number:

AG1453

GenBank Accession Number:

BC009368

GeneID (NCBI):

6602

UNIPROT ID:

Q96GM5

Full Name:

SWI/SNF related, matrix associated, actin dependent regulator of chromatin, subfamily d, member 1

Calculated MW:

58 kDa

Observed MW:

58 kDa

Purification Method:

Antigen affinity purification

Recommended Dilutions:

WB 1:500-1:1000

IP 0.5-4.0 µg for 1.0-3.0 mg of total protein lysate

IHC 1:20-1:200

IF 1:20-1:200

Applications

Tested Applications:

IF/ICC, IHC, IP, WB, ELISA

Cited Applications:

WB, IHC, CoIP

Species Specificity:

human, mouse, rat

Cited Species:

human, mouse

Note-IHC: suggested antigen retrieval with TE buffer pH 9.0; (*) Alternatively, antigen retrieval may be performed with citrate buffer pH 6.0

Positive Controls:

WB: mouse brain tissue, human brain tissue, Jurkat cells

IP: mouse brain tissue,

IHC: human lymphoma tissue,

IF: SH-SY5Y cells,

Background Information

SMARCD1 belongs to the nuclear SWI/SNF chromatin remodeling complex, which regulates transcription and interacts with nucleolin in the nucleus. In addition, it's a member of the neural progenitors-specific chromatin remodeling complex (npBAF complex) and the neuron-specific chromatin remodeling complex (nBAF complex). It possesses a SWIB domain which is homologous to and shares a common fold with the p53-binding domain of MDM2, a cell cycle regulator which interacts with NPM1. SMARCD1 has a strong influence on the Vitamin D-mediated transcriptional activity from an enhancer Vitamin D receptor element (VDRE). And it can mediate critical interactions between nuclear receptors and the BRG1/SMARCA4 chromatin-remodeling complex for transactivation. This antibody may have cross reaction with SMARCD2.

Notable Publications

Author	Pubmed ID	Journal	Application
Xu Zhu	32459350	Nucleic Acids Res	CoIP
Tongyu Liu	32404872	Nat Commun	WB
Shuo Chen	25819031	Cancer Lett	WB

Storage

Storage:

Store at -20°C. Stable for one year after shipment.

Storage Buffer:

PBS with 0.02% sodium azide and 50% glycerol pH 7.3.

Aliquoting is unnecessary for -20°C storage

For technical support and original validation data for this product please contact:

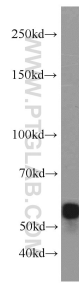
T: 4006900926

E: Proteintech-CN@ptglab.com

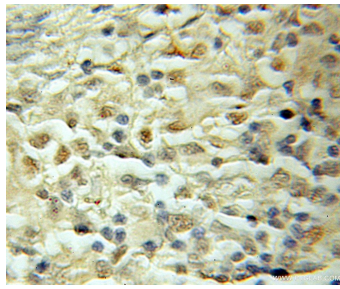
W: ptgcn.com

This product is exclusively available under Proteintech Group brand and is not available to purchase from any other manufacturer.

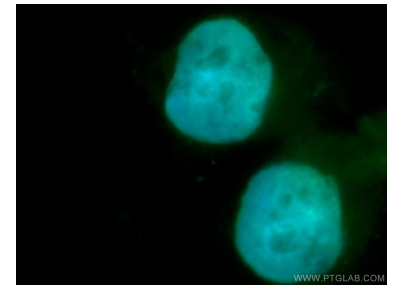
Selected Validation Data



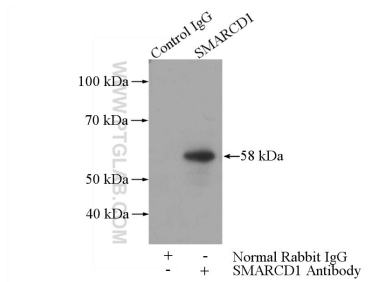
mouse brain tissue were subjected to SDS PAGE followed by western blot with 10998-2-AP (SMARCD1 antibody) at dilution of 1:600 incubated at room temperature for 1.5 hours.



Immunohistochemical analysis of paraffin-embedded human lymphoma using 10998-2-AP (SMARCD1 antibody) at dilution of 1:50 (under 10x lens).



Immunofluorescent analysis of SH-SY5Y cells, using SMARCD1 antibody 10998-2-AP at 1:50 dilution and FITC-labeled donkey anti-rabbit IgG (green). Blue pseudocolor = DAPI (fluorescent DNA dye).



IP result of anti-SMARCD1 (IP:10998-2-AP, 3ug; Detection:10998-2-AP 1:600) with mouse brain tissue lysate 4000ug.