

For Research Use Only

# POLG2 Polyclonal antibody, PBS Only

Catalog Number:10997-2-PBS

Featured Product



## Basic Information

Catalog Number:

10997-2-PBS

Concentration:

1 mg/ml

Source:

Rabbit

Isotype:

IgG

Immunogen Catalog Number:

AG1424

GenBank Accession Number:

BC009194

GeneID (NCBI):

11232

UNIPROT ID:

Q9UHN1

Full Name:

polymerase (DNA directed), gamma 2, accessory subunit

Calculated MW:

55 kDa

Observed MW:

55 kDa

Purification Method:

Antigen affinity purification

## Applications

Tested Applications:

WB, IHC, IF/ICC, Indirect ELISA

Species Specificity:

human, mouse, rat

## Background Information

POLG2(DNA polymerase subunit gamma-2, mitochondrial) can stimulate the polymerase and exonuclease activities. Defects in POLG2 are the cause of progressive external ophthalmoplegia with mitochondrial DNA deletions autosomal dominant type 4 (PEOA4) [MIM:610131].Western blot result suggested that the POLG2 expressed in human fetal kidney and U-251 MG cell lines with a single band of 55kd.

## Storage

Storage:

Store at -80°C.

**The product is shipped with ice packs. Upon receipt, store it immediately at -80°C**

Storage Buffer:

PBS Only

For technical support and original validation data for this product please contact:

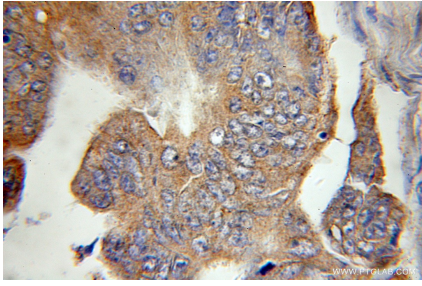
T: 4006900926

E: Proteintech-CN@ptglab.com

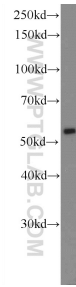
W: ptgcn.com

**This product is exclusively available under Proteintech Group brand and is not available to purchase from any other manufacturer.**

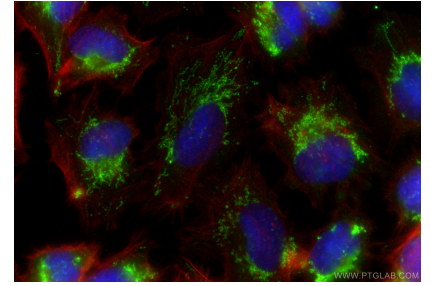
## Selected Validation Data



Immunohistochemical analysis of paraffin-embedded human colon cancer using 10997-2-AP (POLG2 antibody) at dilution of 1:100 (under 10x lens). This data was developed using the same antibody clone with 10997-2-PBS in a different storage buffer formulation.



COLO 320 cells were subjected to SDS PAGE followed by western blot with 10997-2-AP (POLG2 Antibody) at dilution of 1:1000 incubated at room temperature for 1.5 hours. This data was developed using the same antibody clone with 10997-2-PBS in a different storage buffer formulation.



Immunofluorescent analysis of (-20°C Ethanol) fixed U-251 cells using POLG2 antibody (10997-2-AP) at dilution of 1:200 and CoraLite@488- Conjugated Goat Anti-Rabbit IgG(H+L) (SA00013-2), CL594-Phalloidin (red). This data was developed using the same antibody clone with 10997-2-PBS in a different storage buffer formulation.