

For Research Use Only

# POLG2 Polyclonal antibody

Catalog Number: 10997-2-AP

Featured Product

5 Publications



## Basic Information

**Catalog Number:**

10997-2-AP

**Size:**

500 µg/ml

**Source:**

Rabbit

**Isotype:**

IgG

**Immunogen Catalog Number:**

AG1424

**GenBank Accession Number:**

BC009194

**GeneID (NCBI):**

11232

**UNIPROT ID:**

Q9UHN1

**Full Name:**

polymerase (DNA directed), gamma 2, accessory subunit

**Calculated MW:**

55 kDa

**Observed MW:**

55 kDa

**Purification Method:**

Antigen affinity purification

**Recommended Dilutions:**

WB 1:500-1:2000

IHC 1:20-1:200

IF 1:10-1:100

## Applications

**Tested Applications:**

IF/ICC, IHC, WB, ELISA

**Cited Applications:**

WB, IF

**Species Specificity:**

human, mouse, rat

**Cited Species:**

human, mouse

**Note-IHC: suggested antigen retrieval with TE buffer pH 9.0; (\*) Alternatively, antigen retrieval may be performed with citrate buffer pH 6.0**

**Positive Controls:**

WB : COLO 320 cells, mouse colon tissue, HeLa cells

IHC : human colon cancer tissue,

IF : COLO 320 cells,

## Background Information

POLG2(DNA polymerase subunit gamma-2, mitochondrial) can stimulate the polymerase and exonuclease activities. Defects in POLG2 are the cause of progressive external ophthalmoplegia with mitochondrial DNA deletions autosomal dominant type 4 (PEOA4) [MIM:610131]. Western blot result suggested that the POLG2 expressed in human fetal kidney and U-251 MG cell lines with a single band of 55kd.

## Notable Publications

| Author         | Pubmed ID | Journal                           | Application |
|----------------|-----------|-----------------------------------|-------------|
| Teppei Inatomi | 34744028  | Biochim Biophys Acta Mol Cell Res | WB          |
| Yura Do        | 32470614  | Mitochondrion                     | WB          |
| Xinbin Zhao    | 28397817  | Sci Rep                           | WB          |

## Storage

**Storage:**

Store at -20°C. Stable for one year after shipment.

**Storage Buffer:**

PBS with 0.02% sodium azide and 50% glycerol pH 7.3.

Aliquoting is unnecessary for -20°C storage

For technical support and original validation data for this product please contact:

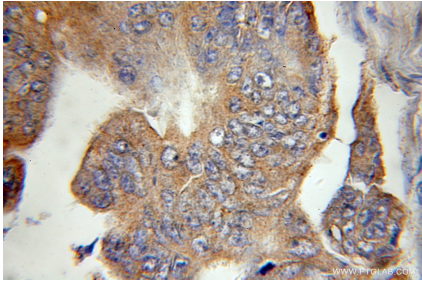
T: 4006900926

E: Proteintech-CN@ptglab.com

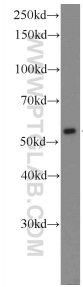
W: ptgcn.com

**This product is exclusively available under Proteintech Group brand and is not available to purchase from any other manufacturer.**

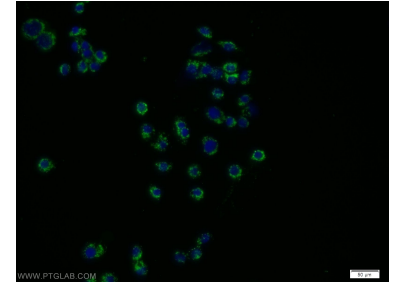
## Selected Validation Data



Immunohistochemical analysis of paraffin-embedded human colon cancer using 10997-2-AP (POLG2 antibody) at dilution of 1:100 (under 10x lens).



COLO 320 cells were subjected to SDS PAGE followed by western blot with 10997-2-AP (POLG2 Antibody) at dilution of 1:1000 incubated at room temperature for 1.5 hours.



Immunofluorescent analysis of COLO 320 cells using 10997-2-AP (POLG2 antibody) at dilution of 1:25 and Alexa Fluor 488-conjugated AffiniPure Goat Anti-Rabbit IgG(H+L).