

VILIP3 Polyclonal antibody

Catalog Number: 10989-1-AP

Featured Product

6 Publications

Basic Information

Catalog Number:

10989-1-AP

Size:

650 µg/ml

Source:

Rabbit

Isotype:

IgG

Immunogen Catalog Number:

AG1449

GenBank Accession Number:

BC009846

GeneID (NCBI):

3241

UNIPROT ID:

P37235

Full Name:

hippocalcin-like 1

Calculated MW:

22 kDa

Observed MW:

22 kDa

Purification Method:

Antigen affinity purification

Recommended Dilutions:

WB 1:5000-1:50000

IP 0.5-4.0 µg for 1.0-3.0 mg of total protein lysate

IHC 1:50-1:500

IF/ICC 1:200-1:800

Applications

Tested Applications:

WB, IHC, IF/ICC, IP, ELISA

Cited Applications:

WB, IHC, IF

Species Specificity:

human, mouse, rat

Cited Species:

human, mouse

Note-IHC: suggested antigen retrieval with TE buffer pH 9.0; (*) Alternatively, antigen retrieval may be performed with citrate buffer pH 6.0

Positive Controls:

WB : SH-SY5Y cells, HeLa cells, mouse brain tissue, rat brain tissue, human brain tissue

IP : mouse brain tissue,

IHC : human kidney tissue, mouse cerebellum tissue

IF/ICC : HeLa cells,

Background Information

VILIP3, is a member of neuron-specific calcium-binding proteins family found in the retina and brain. It is highly similar to human hippocalcin protein and nearly identical to the rat and mouse hippocalcin like-1 proteins. It may be involved in the calcium-dependent regulation of rhodopsin phosphorylation and may be of relevance for neuronal signalling in the central nervous system.

Notable Publications

Author	Pubmed ID	Journal	Application
Tao Chen	36438486	Theranostics	WB
Mingjian Ma	35645147	Cancer Med	WB, IHC
I-Ling Lu	29950674	Nat Commun	IF

Storage

Storage:

Store at -20°C. Stable for one year after shipment.

Storage Buffer:

PBS with 0.02% sodium azide and 50% glycerol pH 7.3.

Aliquoting is unnecessary for -20°C storage

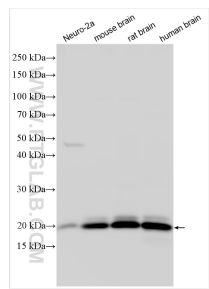
For technical support and original validation data for this product please contact:

T: 4006900926

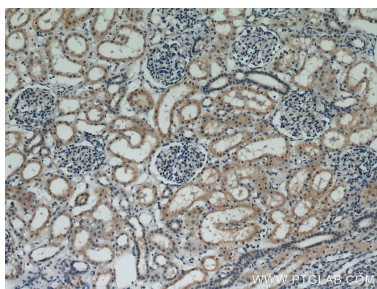
E: Proteintech-CN@ptglab.comW: ptgcn.com

This product is exclusively available under Proteintech Group brand and is not available to purchase from any other manufacturer.

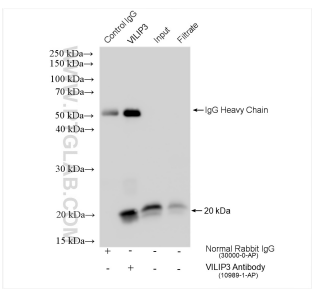
Selected Validation Data



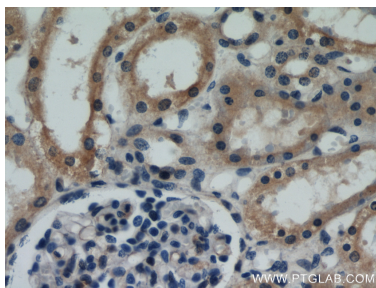
Various lysates were subjected to SDS PAGE followed by western blot with 10989-1-AP (VILIP3 antibody) at dilution of 1:10000 incubated at room temperature for 1.5 hours.



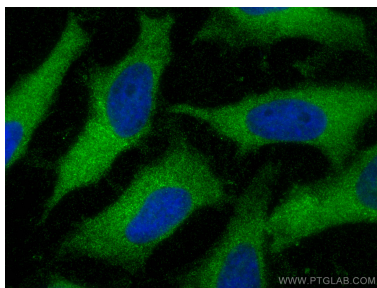
Immunohistochemical analysis of paraffin-embedded human kidney using 10989-1-AP (VILIP3 antibody) at dilution of 1:50 (under 10x lens).



IP result of anti-VILIP3 (IP:10989-1-AP, 4ug; Detection:10989-1-AP 1:10000) with mouse brain tissue lysate 1280 ug.



Immunohistochemical analysis of paraffin-embedded human kidney using 10989-1-AP (VILIP3 antibody) at dilution of 1:50 (under 40x lens).



Immunofluorescent analysis of (-20°C Methanol) fixed HeLa cells using VILIP3 antibody (10989-1-AP) at dilution of 1:400 and CoraLite®488-Conjugated AffiniPure Goat Anti-Rabbit IgG(H+L).