

For Research Use Only

# FceR1a Polyclonal antibody

Catalog Number: 10980-1-AP

7 Publications



## Basic Information

Catalog Number:

10980-1-AP

Size:

350 ug/ml

Source:

Rabbit

Isotype:

IgG

Immunogen Catalog Number:

AG1398

GenBank Accession Number:

BC015195

GeneID (NCBI):

2205

UNIPROT ID:

P12319

Full Name:

Fc fragment of IgE, high affinity I, receptor for; alpha polypeptide

Calculated MW:

30 kDa

Observed MW:

55-70 kDa

Purification Method:

Antigen affinity purification

Recommended Dilutions:

WB 1:1000-1:4000

## Applications

Tested Applications:

WB, ELISA

Cited Applications:

WB, IHC, IF

Species Specificity:

human, mouse, rat

Cited Species:

human, mouse

Positive Controls:

WB : MC/9 cells, human spleen tissue, RAW 264.7 cells, mouse spleen tissue, rat spleen tissue

## Background Information

Fc epsilon Receptor I alpha (FceR1a) is a single-pass type I membrane protein that contains 2 immunoglobulin-like domains. FceR1a forms a tetrameric complex, FceRI, with one beta and two gamma subunits (PMID: 19406478). FceRI is the high-affinity receptor for the Fc region of immunoglobulin E (IgE) (PMID: 1532373). It is expressed on mast cells and basophils and plays a central role in the allergic response (PMID: 2148316). The calculated molecular weight of FceR1a is 30 kDa, the 55- to 70-kDa bands detected by this antibody are probably caused by heterogeneous glycosylation (PMID: 11344350; 12671054).

## Notable Publications

| Author         | Pubmed ID | Journal                | Application |
|----------------|-----------|------------------------|-------------|
| Yunsheng Liang | 31251950  | J Allergy Clin Immunol | WB          |
| Hongmei Zhao   | 34158869  | Theranostics           | WB          |
| Chi Geng       | 35108660  | Transl Res             | WB          |

## Storage

Storage:

Store at -20°C. Stable for one year after shipment.

Storage Buffer:

PBS with 0.02% sodium azide and 50% glycerol pH 7.3.

Aliquoting is unnecessary for -20°C storage

For technical support and original validation data for this product please contact:

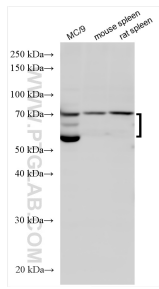
T: 4006900926

E: [Proteintech-CN@ptglab.com](mailto:Proteintech-CN@ptglab.com)

W: [ptgcn.com](http://ptgcn.com)

This product is exclusively available under Proteintech Group brand and is not available to purchase from any other manufacturer.

## Selected Validation Data



Various lysates were subjected to SDS PAGE followed by western blot with 10980-1-AP (Fc Epsilon RI Alpha antibody) at dilution of 1:2000 incubated at room temperature for 1.5 hours.