

For Research Use Only

# KLRG1 Polyclonal antibody, PBS Only

Catalog Number:10974-1-PBS



## Basic Information

Catalog Number:

10974-1-PBS

Size:

1 mg/ml

Source:

Rabbit

Isotype:

IgG

Immunogen Catalog Number:

AG1407

GenBank Accession Number:

BC012621

GeneID (NCBI):

10219

UNIPROT ID:

Q96E93

Full Name:

killer cell lectin-like receptor  
subfamily G, member 1

Calculated MW:

22 kDa

Observed MW:

60-70 kDa

Purification Method:

Antigen affinity purification

## Applications

Tested Applications:

WB, Indirect ELISA

Species Specificity:

human

## Background Information

KLRG1 (killer cell lectin-like receptor subfamily G, member 1) is a C-type lectin inhibitory receptor that contains an immunoreceptor tyrosine-based inhibitory motif (ITIM) in its cytoplasmic domain. KLRG1 is expressed by subsets of NK and T cells, existing both as a monomer and as a disulfide-linked homodimer (PMID: 10741410; 19604491). It is considered to be a cell differentiation marker for NK and T cells and is strongly induced by viral and other infections (PMID: 20373518). Through interactions with members of the cadherin family, KLRG1 plays an inhibitory role in NK- and T-cell function (PMID: 19009530; 20373518). Because of the glycosylation and disulfide bonds of the KLRG1 proteins, the observed molecular weights are typically 30-38 kDa (PMID: 17404256).

## Storage

Storage:

Store at -80°C.

**The product is shipped with ice packs. Upon receipt, store it immediately at -80°C**

Storage Buffer:

PBS Only

For technical support and original validation data for this product please contact:

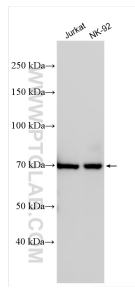
T: 4006900926

E: [Proteintech-CN@ptglab.com](mailto:Proteintech-CN@ptglab.com)

W: [ptgcn.com](http://ptgcn.com)

**This product is exclusively available under Proteintech Group brand and is not available to purchase from any other manufacturer.**

## Selected Validation Data



Various lysates were subjected to SDS PAGE followed by western blot with 10974-1-AP (KLRG1 antibody) at dilution of 1:300 incubated at room temperature for 1.5 hours. This data was developed using the same antibody clone with 10974-1-PBS in a different storage buffer formulation.