

## CTBP1 Polyclonal antibody

Catalog Number: 10972-1-AP

Featured Product

6 Publications

## Basic Information

## Catalog Number:

10972-1-AP

## Size:

300 µg/ml

## Source:

Rabbit

## Isotype:

IgG

## Immunogen Catalog Number:

AG1425

## GenBank Accession Number:

BC011655

## GeneID (NCBI):

1487

## UNIPROT ID:

Q13363

## Full Name:

C-terminal binding protein 1

## Calculated MW:

48 kDa

## Observed MW:

48 kDa

## Purification Method:

Antigen affinity purification

## Recommended Dilutions:

WB 1:1000-1:8000

IP 0.5-4.0 µg for 1.0-3.0 mg of total protein lysate

IHC 1:50-1:500

IF 1:50-1:500

## Applications

## Tested Applications:

FC, IF/ICC, IHC, IP, WB, ELISA

## Cited Applications:

WB, IF

## Species Specificity:

human, mouse

## Cited Species:

human, mouse

**Note-IHC: suggested antigen retrieval with TE buffer pH 9.0; (\*) Alternatively, antigen retrieval may be performed with citrate buffer pH 6.0**

## Positive Controls:

**WB** : HEK-293 cells, mouse skeletal muscle tissue, mouse thymus tissue, mouse brain tissue, HepG2 cells, Jurkat cells, NIH/3T3 cells, SH-SY5Y cells, HeLa cells

**IP** : mouse brain tissue,

**IHC** : human prostate cancer tissue,

**IF** : HepG2 cells,

## Background Information

CTBP1, also named as C-terminal-binding protein 1, is a 440 amino acid protein, which belongs to the D-isomer specific 2-hydroxyacid dehydrogenase family. CTBP1 is a cellular phosphoprotein that associates with various proteins and functions as a corepressor of transcription. CTBP1 and the related protein CTBP2 are characterized as C-terminal binding protein of adenovirus E1A, and they preferentially associate with the E1A via a 5-amino acid motif, PLDLS, to repress E1A induced oncogenesis and cellular transformation. CTBP1 is expressed from embryo to adult, but CTBP2 is mainly expressed during embryogenesis.

## Notable Publications

Author	Pubmed ID	Journal	Application
Lifang Li	28947780	Nat Commun	WB
Yang Yu	31636387	Oncogene	WB,IF
Kirthana Prabhakar	31338875	Mol Carcinog	WB

## Storage

## Storage:

Store at -20°C. Stable for one year after shipment.

## Storage Buffer:

PBS with 0.02% sodium azide and 50% glycerol pH 7.3.

Aliquoting is unnecessary for -20°C storage

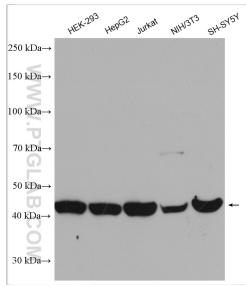
For technical support and original validation data for this product please contact:

T: 4006900926

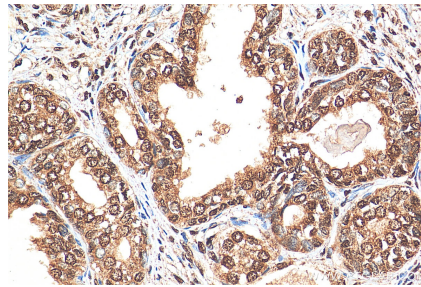
E: [Proteintech-CN@ptglab.com](mailto:Proteintech-CN@ptglab.com)W: [ptgcn.com](http://ptgcn.com)

**This product is exclusively available under Proteintech Group brand and is not available to purchase from any other manufacturer.**

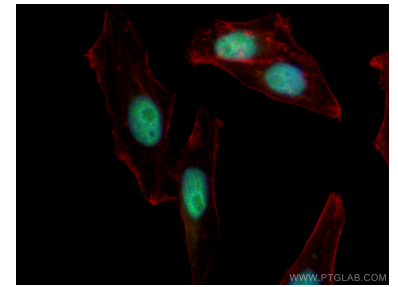
## Selected Validation Data



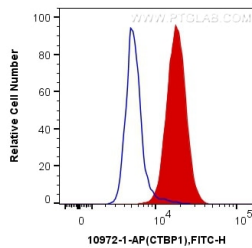
Various lysates were subjected to SDS PAGE followed by western blot with 10972-1-AP (CTBP1 antibody) at dilution of 1:4000 incubated at room temperature for 1.5 hours.



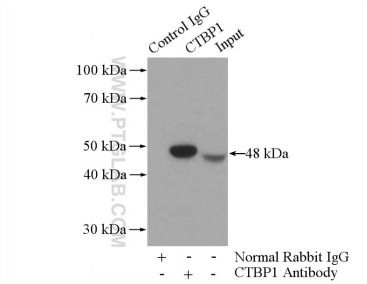
Immunohistochemical analysis of paraffin-embedded human prostate cancer tissue slide using 10972-1-AP (CTBP1 antibody) at dilution of 1:200 (under 40x lens). Heat mediated antigen retrieval with Tris-EDTA buffer (pH 9.0).



Immunofluorescent analysis of (4% PFA) fixed HepG2 cells using CTBP1 antibody (10972-1-AP) at dilution of 1:200 and CoraLite@488-Conjugated AffiniPure Goat Anti-Rabbit IgG(H+L), CL594-Phalloidin (red).



1X10<sup>6</sup> HepG2 cells were intracellularly stained with 0.4 ug Anti-Human CTBP1 (10972-1-AP) and CoraLite@488-Conjugated AffiniPure Goat Anti-Rabbit IgG(H+L) at dilution 1:1000 (red), or 0.4 ug Control Antibody. Cells were fixed and permeabilized with Transcription Factor Staining Buffer Kit (PF00011).



IP result of anti-CTBP1 (IP:10972-1-AP, 3ug; Detection:10972-1-AP 1:200) with mouse brain tissue lysate 4000ug.