

For Research Use Only

PABPC1,PABP Polyclonal antibody

Catalog Number:10970-1-AP

Featured Product

40 Publications



Basic Information

Catalog Number:

10970-1-AP

Concentration:

500 ug/ml

Source:

Rabbit

Isotype:

IgG

Immunogen Catalog Number:

AG1422

GenBank Accession Number:

BC015958

GeneID (NCBI):

26986

UNIPROT ID:

P11940

Full Name:

poly(A) binding protein, cytoplasmic 1

Calculated MW:

71 kDa

Observed MW:

71 kDa

Purification Method:

Antigen affinity purification

Recommended Dilutions:

WB 1:1000-1:5000

IP 0.5-4.0 ug for 1.0-3.0 mg of total protein lysate

IHC 1:20-1:200

IF/ICC 1:200-1:800

Applications

Tested Applications:

WB, IHC, IF/ICC, IP, ELISA

Cited Applications:

WB, IHC, IF, IP, CoIP, RIP

Species Specificity:

human, mouse, rat

Cited Species:

human, mouse, rat, pig

Note-IHC: suggested antigen retrieval with TE buffer pH 9.0; (*) Alternatively, antigen retrieval may be performed with citrate buffer pH 6.0

Positive Controls:

WB : HCT 116 cells, mouse testis tissue, PC-3 cells, HeLa cells, A549 cells, rat testis tissue, HT-29 cells, MCF-7 cells, NCI-H1299 cells, HCT-116 cells

IP : mouse testis tissue,

IHC : human pancreas tissue, human testis tissue

IF/ICC : MCF-7 cells,

Background Information

The poly(A)-binding protein (PABP), which is found complexed to the 3-prime poly(A) tail of eukaryotic mRNA, is required for poly(A) shortening and translation initiation [PMID: 21989405]. Polyadenylate-binding protein 1 (PABPC1) is a cytoplasmic-nuclear shuttling protein important for protein translation initiation, and both RNA processing and stability. In the cytoplasm, PABPC1 binds to the 3' poly(A) tail of eukaryotic mRNAs through its RNA-recognition motifs (RRM) and interacts with the N-terminus of eIF4G, part of the eIF4F complex associated with the 5' cap structure [PMID:20009508, 17381337].

Notable Publications

Author	Pubmed ID	Journal	Application
S Prpar Mihevc	27665936	Sci Rep	WB,IF
Rhea Nadkarni	36129453	J Exp Med	WB
Qianqian Yang	36434041	Exp Mol Med	WB

Storage

Storage:

Store at -20°C. Stable for one year after shipment.

Storage Buffer:

PBS with 0.02% sodium azide and 50% glycerol, pH7.3

Aliquoting is unnecessary for -20°C storage

For technical support and original validation data for this product please contact:

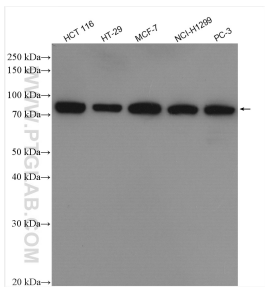
T: 4006900926

E: Proteintech-CN@ptglab.com

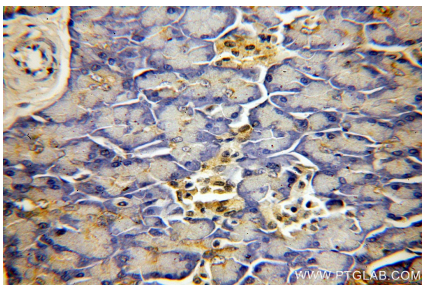
W: ptgcn.com

This product is exclusively available under Proteintech Group brand and is not available to purchase from any other manufacturer.

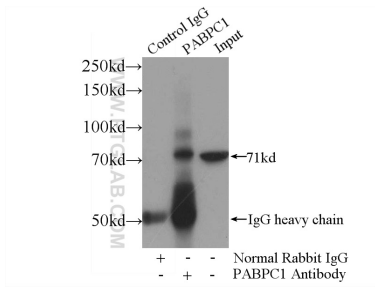
Selected Validation Data



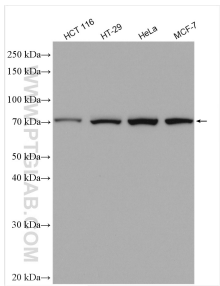
Various lysates were subjected to SDS PAGE followed by western blot with 10970-1-AP (PABPC1,PABP antibody) at dilution of 1:2500 incubated at room temperature for 1.5 hours.



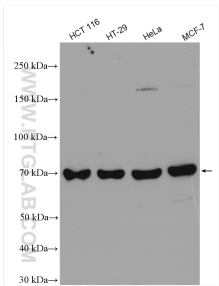
Immunohistochemical analysis of paraffin-embedded human pancreas using 10970-1-AP (PABPC1,PABP antibody) at dilution of 1:50 (under 40x lens).



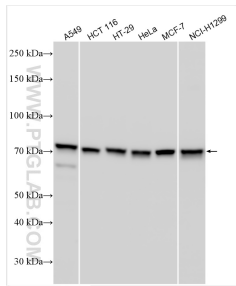
IP result of anti-PABPC1, PABP (IP:10970-1-AP, 4ug; Detection:10970-1-AP 1:700) with mouse testis tissue lysate 4000ug.



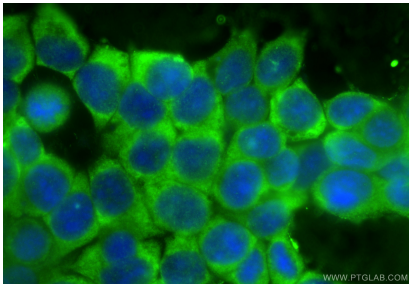
Various lysates were subjected to SDS PAGE followed by western blot with 10970-1-AP (PABPC1,PABP antibody) at dilution of 1:6000 incubated at room temperature for 1.5 hours.



Various lysates were subjected to SDS PAGE followed by western blot with 10970-1-AP (PABPC1,PABP antibody) at dilution of 1:6000 incubated at room temperature for 1.5 hours.



Various lysates were subjected to SDS PAGE followed by western blot with 10970-1-AP (PABPC1,PABP antibody) at dilution of 1:8000 incubated at room temperature for 1.5 hours.



Immunofluorescent analysis of (-20°C Methanol) fixed MCF-7 cells using PABPC1,PABP antibody (10970-1-AP) at dilution of 1:400 and CoraLite®488-Conjugated Goat Anti-Rabbit IgG(H+L) (SA00013-2).