

For Research Use Only

MESDC2 Polyclonal antibody

Catalog Number: 10958-1-AP



Basic Information

Catalog Number:

10958-1-AP

Size:

600 ug/ml

Source:

Rabbit

Isotype:

IgG

Immunogen Catalog Number:

AG1403

GenBank Accession Number:

BC009210

GeneID (NCBI):

23184

UNIPROT ID:

Q14696

Full Name:

mesoderm development candidate 2

Calculated MW:

26 kDa

Observed MW:

26-28 kDa

Purification Method:

Antigen affinity purification

Recommended Dilutions:

WB 1:500-1:1000

IHC 1:500-1:2000

Applications

Tested Applications:

WB, IHC, ELISA

Species Specificity:

human, mouse

Note-IHC: suggested antigen retrieval with *TE buffer pH 9.0*; (*) Alternatively, antigen retrieval may be performed with *citrate buffer pH 6.0*

Positive Controls:

WB : HEK-293 cells, HeLa cells, NIH/3T3 cells

IHC : human placenta tissue, human stomach tissue

Background Information

Storage

Storage:

Store at -20°C. Stable for one year after shipment.

Storage Buffer:

PBS with 0.02% sodium azide and 50% glycerol pH 7.3.

Aliquoting is unnecessary for -20°C storage

For technical support and original validation data for this product please contact:

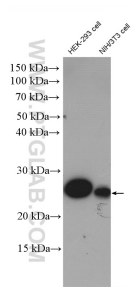
T: 4006900926

E: Proteintech-CN@ptglab.com

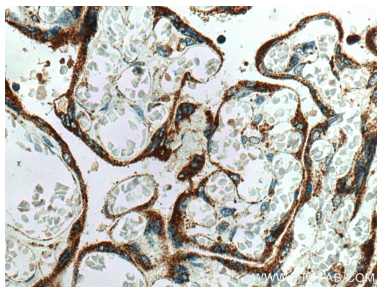
W: ptgcn.com

This product is exclusively available under Proteintech Group brand and is not available to purchase from any other manufacturer.

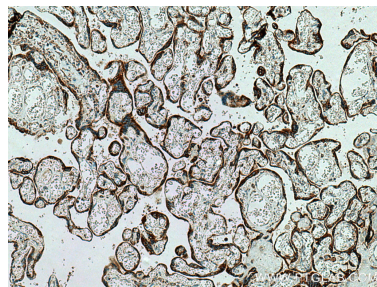
Selected Validation Data



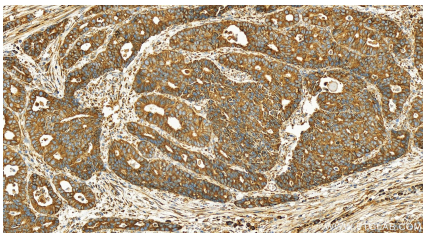
Various lysates were subjected to SDS PAGE followed by western blot with 10958-1-AP (MESDC2 antibody) at dilution of 1:800 incubated at 4 degree celsius over night.



Immunohistochemical analysis of paraffin-embedded human placenta tissue slide using 10958-1-AP (MESDC2 antibody) at dilution of 1:1000 (under 40x lens). Heat mediated antigen retrieval with Tris-EDTA buffer (pH 9.0).



Immunohistochemical analysis of paraffin-embedded human placenta tissue slide using 10958-1-AP (MESDC2 antibody) at dilution of 1:1000 (under 10x lens). Heat mediated antigen retrieval with Tris-EDTA buffer (pH 9.0).



Immunohistochemical analysis of paraffin-embedded normal stomach slide using 10958-1-AP (MESDC2 antibody) at dilution of 1:400 (under 20x lens). Heat mediated antigen retrieval with Tris-EDTA buffer (pH 9.0).