

For Research Use Only

# Lactotransferrin/LTF Polyclonal antibody, PBS Only

Catalog Number: 10933-1-PBS

Featured Product



## Basic Information

Catalog Number:

10933-1-PBS

Size:

1 mg/ml

Source:

Rabbit

Isotype:

IgG

Immunogen Catalog Number:

AG1379

GenBank Accession Number:

BC015822

GeneID (NCBI):

4057

UNIPROT ID:

P02788

Full Name:

lactotransferrin

Calculated MW:

80 kDa

Observed MW:

30,51,80 kDa

Purification Method:

Antigen affinity purification

## Applications

Tested Applications:

WB, IHC, IP, Indirect ELISA

Species Specificity:

human

## Background Information

LTF (Lactotransferrin) is also named as GIG12, LF and belongs to the transferrin family. It is an iron binding transport protein which can bind two atoms of ferric iron in association with the binding of an anion, usually bicarbonate. LTF is also an important protein component of the innate immune system that is broadly distributed within the body fluids. It can contribute to the activation of both the innate and adaptive immune responses by promoting the recruitment of leukocytes and activation of dendritic cells (PMID:18453607). This protein has 2 isoforms produced by alternative promoter usage. The human LTF can be isolated two fragments, an N-terminal tryptic fragment having an MW of 30 kDa and a C-terminal tryptic fragment having an MW of 50 kDa by a mild tryptic digest (PMID:3790094).

## Storage

Storage:

Store at -80°C.

The product is shipped with ice packs. Upon receipt, store it immediately at -80°C

Storage Buffer:

PBS Only

For technical support and original validation data for this product please contact:

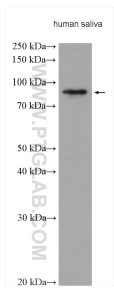
T: 4006900926

E: [Proteintech-CN@ptglab.com](mailto:Proteintech-CN@ptglab.com)

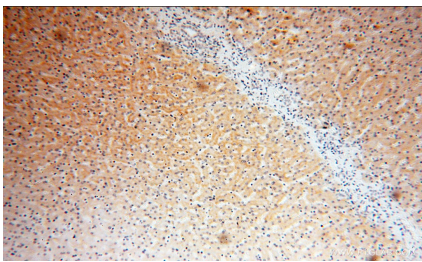
W: [ptgcn.com](http://ptgcn.com)

This product is exclusively available under Proteintech Group brand and is not available to purchase from any other manufacturer.

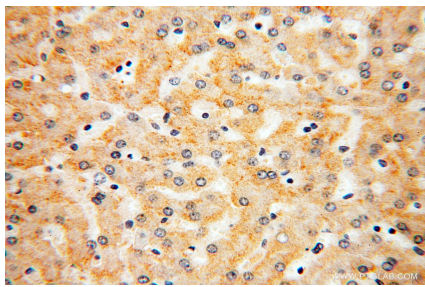
Selected Validation Data



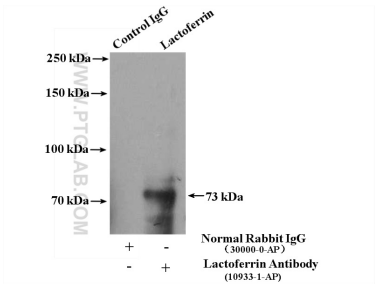
human saliva were subjected to SDS PAGE followed by western blot with 10933-1-AP (Lactoferrin antibody) at dilution of 1:2000 incubated at room temperature for 1.5 hours. This data was developed using the same antibody clone with 10933-1-PBS in a different storage buffer formulation.



Immunohistochemical analysis of paraffin-embedded human liver using 10933-1-AP (Lactoferrin antibody) at dilution of 1:50 (under 10x lens). This data was developed using the same antibody clone with 10933-1-PBS in a different storage buffer formulation.



Immunohistochemical analysis of paraffin-embedded human liver using 10933-1-AP (Lactoferrin antibody) at dilution of 1:50 (under 40x lens). This data was developed using the same antibody clone with 10933-1-PBS in a different storage buffer formulation.



IP result of anti-LTF (IP:10933-1-AP, 4ug; Detection:10933-1-AP 1:600) with HeLa cells lysate 4000ug. This data was developed using the same antibody clone with 10933-1-PBS in a different storage buffer formulation.