

SULT1A1 Polyclonal antibody

Catalog Number: 10911-2-AP

7 Publications

Basic Information

Catalog Number:

10911-2-AP

Size:

400 µg/ml

Source:

Rabbit

Isotype:

IgG

Immunogen Catalog Number:

AG1344

GenBank Accession Number:

BC000923

GeneID (NCBI):

6817

UNIPROT ID:

P50225

Full Name:

sulfotransferase family, cytosolic, 1A,
phenol-preferring, member 1

Calculated MW:

34 kDa

Observed MW:

34 kDa

Purification Method:

Antigen affinity purification

Recommended Dilutions:

WB 1:500-1:2000

IP 0.5-4.0 µg for 1.0-3.0 mg of total
protein lysate

IF 1:20-1:200

Applications

Tested Applications:

FC, IF/ICC, IP, WB, ELISA

Cited Applications:

WB, IHC

Species Specificity:

human, mouse, rat

Cited Species:

human, mouse, rat

Positive Controls:

WB : mouse liver tissue, rat liver tissue

IP : mouse liver tissue,

IF : HepG2 cells,

Background Information

SULT1A1, also named as ST1A1, P-PST 1, ST1A3, Ts-PST, P-PST 1, STP and STP1, belongs to the sulfotransferase 1 family. It catalyzes the sulfate conjugation of catecholamines, phenolic drugs and neurotransmitters. SULT1A1 is also responsible for the sulfation and activation of minoxidil. It mediates the metabolic activation of carcinogenic N-hydroxyarylamines to DNA binding products and could so participate as modulating factor of cancer risk. SULT1A1 is one of two phenol sulfotransferases with thermostable enzyme activity.

Notable Publications

Author	Pubmed ID	Journal	Application
Shu Xiao-Hong XH	22096581	PLoS One	WB, IHC
Xu Zheng	30116486	Oxid Med Cell Longev	WB
Bin Jia	33391410	J Cancer	IHC, WB

Storage

Storage:

Store at -20°C. Stable for one year after shipment.

Storage Buffer:

PBS with 0.02% sodium azide and 50% glycerol pH 7.3.

Aliquoting is unnecessary for -20°C storage

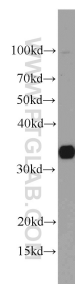
For technical support and original validation data for this product please contact:

T: 4006900926

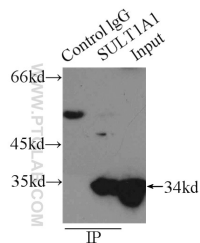
E: Proteintech-CN@ptglab.comW: ptgcn.com

This product is exclusively available under Proteintech Group brand and is not available to purchase from any other manufacturer.

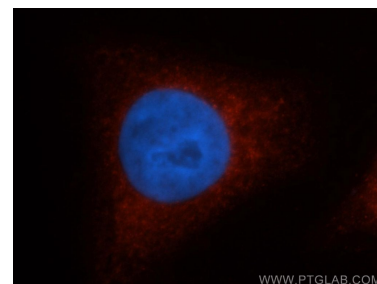
Selected Validation Data



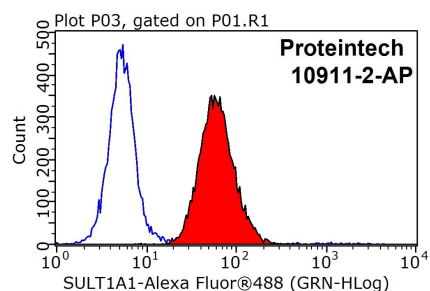
mouse liver tissue were subjected to SDS PAGE followed by western blot with 10911-2-AP (SULT1A1 antibody) at dilution of 1:1000 incubated at room temperature for 1.5 hours.



IP result of anti-SULT1A1 (IP:10911-2-AP, 3ug; Detection:10911-2-AP 1:1000) with mouse liver tissue lysate 12500ug.



Immunofluorescent analysis of HepG2 cells, using SULT1A1 antibody 10911-2-AP at 1:50 dilution and Rhodamine-labeled goat anti-rabbit IgG (red). Blue pseudocolor = DAPI (fluorescent DNA dye).



1X10⁶ HepG2 cells were stained with 0.2ug SULT1A1 antibody (10911-2-AP, red) and control antibody (blue). Fixed with 90% MeOH blocked with 3% BSA (30 min). Alexa Fluor 488-conjugated AffiniPure Goat Anti-Rabbit IgG(H+L) with dilution 1:1000.