

ING3 Polyclonal antibody

Catalog Number: 10905-1-AP

Featured Product

7 Publications

Basic Information

Catalog Number:

10905-1-AP

Size:

700 µg/ml

Source:

Rabbit

Isotype:

IgG

Immunogen Catalog Number:

AG1357

GenBank Accession Number:

BC009777

GeneID (NCBI):

54556

UNIPROT ID:

Q9NXR8

Full Name:

inhibitor of growth family, member 3

Calculated MW:

46 kDa

Observed MW:

47 kDa

Purification Method:

Antigen affinity purification

Recommended Dilutions:

WB 1:500-1:1000

IHC 1:20-1:200

Applications

Tested Applications:

IHC, WB, ELISA

Cited Applications:

WB, IP, IHC

Species Specificity:

human, mouse

Cited Species:

human

Note-IHC: suggested antigen retrieval with TE buffer pH 9.0; (*) Alternatively, antigen retrieval may be performed with citrate buffer pH 6.0

Positive Controls:

WB : mouse uterus tissue, HepG2 cells

IHC : human breast cancer tissue,

Background Information

Members of inhibitor of growth (ING) family function in inhibiting cell growth and inducing apoptosis. They are sequence homologous proteins. ING3 can activate p53 trans-activated promoters, including promoters of p21/waf1 and bax. This antibody is specifically against p47ING3.

Notable Publications

Author	Pubmed ID	Journal	Application
Guoyu Yu	25189355	Mol Cancer Res	WB
Xiaoyan Wu	33469513	Front Oncol	IHC
Wen-Feng Gou	24927342	Indian J Med Res	WB,IHC

Storage

Storage:

Store at -20°C. Stable for one year after shipment.

Storage Buffer:

PBS with 0.02% sodium azide and 50% glycerol pH 7.3.

Aliquoting is unnecessary for -20°C storage

For technical support and original validation data for this product please contact:

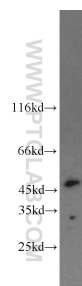
T: 4006900926

E: Proteintech-CN@ptglab.com

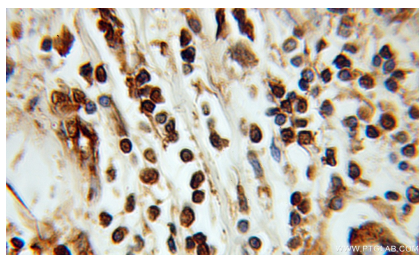
W: ptgcn.com

This product is exclusively available under Proteintech Group brand and is not available to purchase from any other manufacturer.

Selected Validation Data



mouse uterus tissue were subjected to SDS PAGE followed by western blot with 10905-1-AP (ING3 antibody) at dilution of 1:800 incubated at room temperature for 1.5 hours.



Immunohistochemical analysis of paraffin-embedded human breast cancer using 10905-1-AP (ING3 antibody) at dilution of 1:100 (under 10x lens).