

# PHF11 Polyclonal antibody

Catalog Number: 10898-1-AP

Featured Product

6 Publications

## Basic Information

## Catalog Number:

10898-1-AP

## Size:

650 µg/ml

## Source:

Rabbit

## Isotype:

IgG

## Immunogen Catalog Number:

AG1318

## GenBank Accession Number:

BC017212

## GeneID (NCBI):

51131

## UNIPROT ID:

Q9UIL8

## Full Name:

PHD finger protein 11

## Calculated MW:

34 kDa

## Observed MW:

34 kDa

## Purification Method:

Antigen affinity purification

## Recommended Dilutions:

WB 1:500-1:1000

IHC 1:20-1:200

## Applications

## Tested Applications:

IHC, WB, ELISA

## Cited Applications:

WB, IP, IF

## Species Specificity:

human, mouse

## Cited Species:

human, mouse

**Note-IHC: suggested antigen retrieval with TE buffer pH 9.0; (\*) Alternatively, antigen retrieval may be performed with citrate buffer pH 6.0**

## Positive Controls:

WB : HeLa cells, HEK-293 cells, mouse thymus tissue

IHC : human lymphoma tissue,

## Background Information

PHF11 is a transcriptional co-activator of the Th1 effector cytokine genes, interleukin-2 (IL2) and interferon- $\gamma$  (IFNG), co-operating with nuclear factor kappa B (NF- $\kappa$ B). The reduction in PHF11 expression seen with an AD-associated genotype could contribute to the strong T(H)2 responses that characterize many allergic individuals.

## Notable Publications

Author	Pubmed ID	Journal	Application
Pauline Muscat	26573531	BMC Immunol	IF
Mehdi Eshraghi	33674575	Nat Commun	WB
Melissa Kane	32678836	PLoS Pathog	WB

## Storage

## Storage:

Store at -20°C. Stable for one year after shipment.

## Storage Buffer:

PBS with 0.02% sodium azide and 50% glycerol pH 7.3.

Aliquoting is unnecessary for -20°C storage

For technical support and original validation data for this product please contact:

T: 4006900926

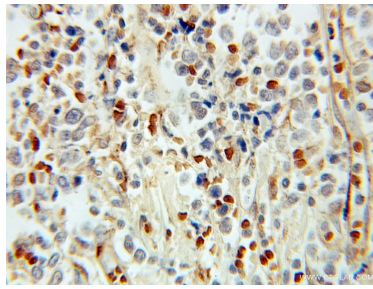
E: [Proteintech-CN@ptglab.com](mailto:Proteintech-CN@ptglab.com)W: [ptgcn.com](http://ptgcn.com)

This product is exclusively available under Proteintech Group brand and is not available to purchase from any other manufacturer.

## Selected Validation Data



HeLa cells were subjected to SDS PAGE followed by western blot with 10898-1-AP (PHF11 antibody) at dilution of 1:300 incubated at room temperature for 1.5 hours.



Immunohistochemical analysis of paraffin-embedded human lymphoma using 10898-1-AP (PHF11 antibody) at dilution of 1:100 (under 10x lens).