

For Research Use Only

# PLDN Polyclonal antibody

Catalog Number: 10891-2-AP

Featured Product

19 Publications



## Basic Information

**Catalog Number:**

10891-2-AP

**Size:**

800 µg/ml

**Source:**

Rabbit

**Isotype:**

IgG

**Immunogen Catalog Number:**

AG1337

**GenBank Accession Number:**

BC004819

**GeneID (NCBI):**

26258

**UNIPROT ID:**

Q9UL45

**Full Name:**

pallidin homolog (mouse)

**Calculated MW:**

23-24 kDa

**Observed MW:**

25 kDa

**Purification Method:**

Antigen affinity purification

**Recommended Dilutions:**

WB 1:1000-1:4000

IP 0.5-4.0 µg for 1.0-3.0 mg of total protein lysate

IHC 1:50-1:500

## Applications

**Tested Applications:**

IHC, IP, WB, ELISA

**Cited Applications:**

WB, IP, IF

**Species Specificity:**

human, mouse, rat

**Cited Species:**

human, rat, mouse

**Note-IHC: suggested antigen retrieval with TE buffer pH 9.0; (\*) Alternatively, antigen retrieval may be performed with citrate buffer pH 6.0**

**Positive Controls:**

WB : A431 cells, HeLa cells, K-562 cells

IP : K-562 cells,

IHC : human breast cancer tissue,

## Background Information

Pallidin, also named as PLDN and PA, is involved in the development of lysosome-related organelles, such as melanosomes and platelet-dense granules. It may play a role in intracellular vesicle trafficking, particularly in the vesicle-docking and fusion process. Pallidin interacts with syntaxin-12 which is a t-SNARE protein that mediates vesicle docking and fusion. Pallidin is a 25 kDa subunit of the octamer BLOC-1.

## Notable Publications

Author	Pubmed ID	Journal	Application
Meng-Hsuan Jerry Han	25198678	J Proteome Res	WB
Ankush Borlepawar	33142804	Cells	WB
Seunghyi Kook	29190429	Am J Respir Cell Mol Biol	WB

## Storage

**Storage:**

Store at -20°C. Stable for one year after shipment.

**Storage Buffer:**

PBS with 0.02% sodium azide and 50% glycerol pH 7.3.

Aliquoting is unnecessary for -20°C storage

For technical support and original validation data for this product please contact:

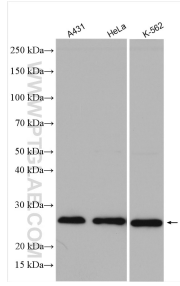
T: 4006900926

E: [Proteintech-CN@ptglab.com](mailto:Proteintech-CN@ptglab.com)

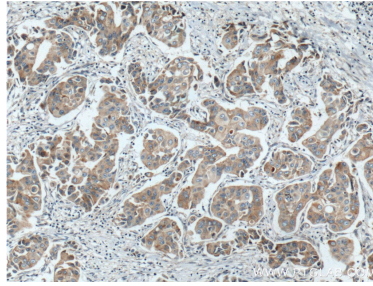
W: [ptgcn.com](http://ptgcn.com)

This product is exclusively available under Proteintech Group brand and is not available to purchase from any other manufacturer.

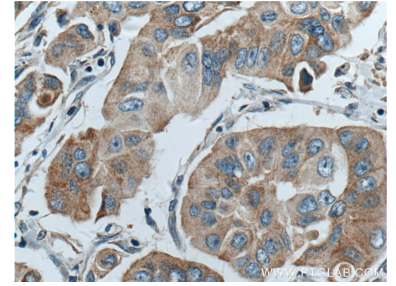
## Selected Validation Data



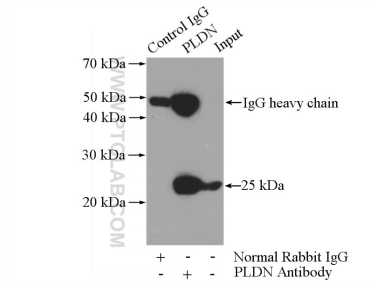
Various lysates were subjected to SDS PAGE followed by western blot with 10891-2-AP (PLDN antibody) at dilution of 1:2000 incubated at room temperature for 1.5 hours.



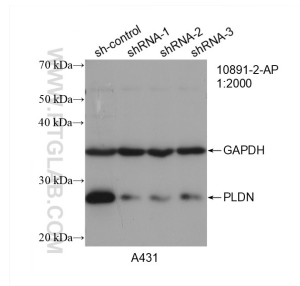
Immunohistochemical analysis of paraffin-embedded human breast cancer tissue slide using 10891-2-AP (PLDN antibody) at dilution of 1:200 (under 10x lens. Heat mediated antigen retrieval with Tris-EDTA buffer (pH 9.0).



Immunohistochemical analysis of paraffin-embedded human breast cancer tissue slide using 10891-2-AP (PLDN antibody) at dilution of 1:200 (under 40x lens. Heat mediated antigen retrieval with Tris-EDTA buffer (pH 9.0).



IP result of anti-PLDN (IP:10891-2-AP, 3ug; Detection:10891-2-AP 1:500) with K-562 cells lysate 3600ug.



WB result of PLDN antibody (10891-2-AP; 1:2000; incubated at room temperature for 1.5 hours) with sh-Control and sh-PLDN transfected A431 cells.