

For Research Use Only

PITX1 Polyclonal antibody

Catalog Number: 10873-1-AP

Featured Product

6 Publications



Basic Information

Catalog Number:

10873-1-AP

Size:

700 ug/ml

Source:

Rabbit

Isotype:

IgG

Immunogen Catalog Number:

AG1303

GenBank Accession Number:

BC009412

GeneID (NCBI):

5307

UNIPROT ID:

P78337

Full Name:

paired-like homeodomain 1

Calculated MW:

34 kDa

Observed MW:

38-40 kDa

Purification Method:

Antigen affinity purification

Recommended Dilutions:

WB 1:500-1:2000

IP 0.5-4.0 ug for 1.0-3.0 mg of total protein lysate

IHC 1:20-1:200

Applications

Tested Applications:

WB, IHC, IP, ELISA

Cited Applications:

WB, IHC, IF

Species Specificity:

human, mouse

Cited Species:

human, mouse, rat

Note-IHC: suggested antigen retrieval with TE buffer pH 9.0; (*) Alternatively, antigen retrieval may be performed with citrate buffer pH 6.0

Positive Controls:

WB : HeLa cells, A431 cells, MCF-7 cells

IP : HeLa cells,

IHC : human tonsillitis tissue, human colon tissue

Background Information

PITX1, also named as Pituitary homeobox 1 or BFT, is a 314 amino acid protein, which contains one homeobox DNA-binding domain and belongs to the paired homeobox family. Bicoid subfamily. PITX1 localizes in the nucleus and may play a role in the development of anterior structures, and in particular, the brain and facies and in specifying the identity or structure of hindlimb.

Notable Publications

Author	Pubmed ID	Journal	Application
Yu Jin	32905855	Int J Biochem Cell Biol	WB,IHC
Xiaomei He	34614161	Nucleic Acids Res	WB
Joshua E Burda	35614216	Nature	IHC

Storage

Storage:

Store at -20°C. Stable for one year after shipment.

Storage Buffer:

PBS with 0.02% sodium azide and 50% glycerol pH 7.3.

Aliquoting is unnecessary for -20°C storage

For technical support and original validation data for this product please contact:

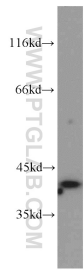
T: 4006900926

E: Proteintech-CN@ptglab.com

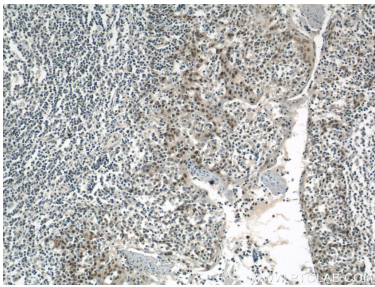
W: ptgcn.com

This product is exclusively available under Proteintech Group brand and is not available to purchase from any other manufacturer.

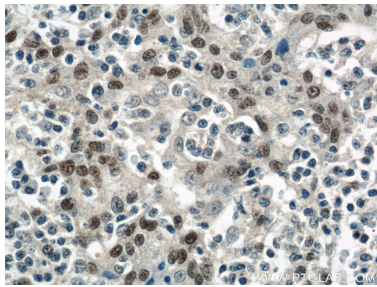
Selected Validation Data



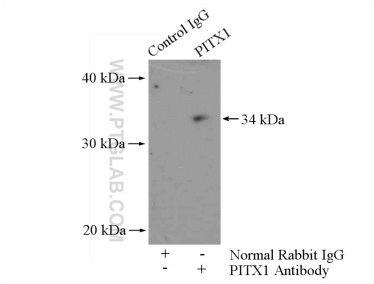
HeLa cells were subjected to SDS PAGE followed by western blot with 10873-1-AP (PITX1 antibody) at dilution of 1:800 incubated at room temperature for 1.5 hours.



Immunohistochemical analysis of paraffin-embedded human tonsillitis using 10873-1-AP (PITX1 antibody) at dilution of 1:50 (under 10x lens).



Immunohistochemical analysis of paraffin-embedded human tonsillitis using 10873-1-AP (PITX1 antibody) at dilution of 1:50 (under 40x lens).



IP result of anti-PITX1 (IP:10873-1-AP, 4ug; Detection:10873-1-AP 1:1000) with HeLa cells lysate 1200ug.