

For Research Use Only

PKC Zeta Polyclonal antibody

Catalog Number: 10860-1-AP

Featured Product

2 Publications



Basic Information

Catalog Number:

10860-1-AP

Size:

300 µg/ml

Source:

Rabbit

Isotype:

IgG

Immunogen Catalog Number:

AG1310

GenBank Accession Number:

BC014270

GeneID (NCBI):

5590

UNIPROT ID:

Q05513

Full Name:

protein kinase C, zeta

Calculated MW:

80 kDa

Observed MW:

68 kDa

Purification Method:

Antigen affinity purification

Recommended Dilutions:

WB 1:500-1:1000

IHC 1:50-1:500

Applications

Tested Applications:

IHC, WB, ELISA

Cited Applications:

WB, IF, IHC

Species Specificity:

human, mouse

Cited Species:

human, mouse

Note-IHC: suggested antigen retrieval with TE buffer pH 9.0; (*) Alternatively, antigen retrieval may be performed with citrate buffer pH 6.0

Positive Controls:

WB : HEK-293 cells, NIH/3T3 cells

IHC : human breast cancer tissue,

Background Information

Notable Publications

Author	Pubmed ID	Journal	Application
Hao-Fan Wang	36077689	Cancers (Basel)	WB, IHC
Alejandro M Chibly	29679075	Sci Rep	IF

Storage

Storage:

Store at -20°C. Stable for one year after shipment.

Storage Buffer:

PBS with 0.02% sodium azide and 50% glycerol pH 7.3.

Aliquoting is unnecessary for -20°C storage

For technical support and original validation data for this product please contact:

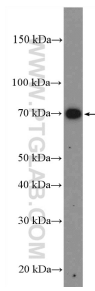
T: 4006900926

E: Proteintech-CN@ptglab.com

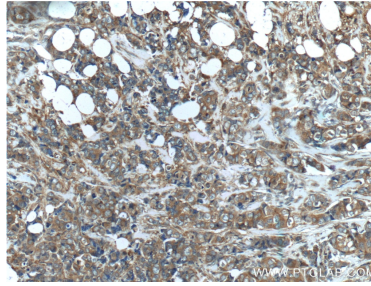
W: ptgcn.com

This product is exclusively available under Proteintech Group brand and is not available to purchase from any other manufacturer.

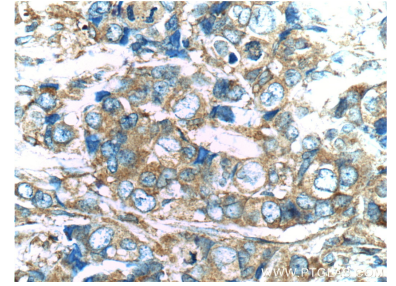
Selected Validation Data



HEK-293 cells were subjected to SDS PAGE followed by western blot with 10860-1-AP (PKC zeta antibody at dilution of 1:600 incubated at room temperature for 1.5 hours.



Immunohistochemical analysis of paraffin-embedded human breast cancer tissue slide using 10860-1-AP (PKC zeta antibody at dilution of 1:200 (under 10x lens).



Immunohistochemical analysis of paraffin-embedded human breast cancer tissue slide using 10860-1-AP (PKC zeta antibody at dilution of 1:200 (under 40x lens).