

For Research Use Only

# TADA3L Polyclonal antibody

Catalog Number: 10839-1-AP

1 Publications



## Basic Information

Catalog Number:

10839-1-AP

Concentration:

800 µg/ml

Source:

Rabbit

Isotype:

IgG

Immunogen Catalog Number:

AG1276

GenBank Accession Number:

BC009240

GeneID (NCBI):

10474

UNIPROT ID:

O75528

Full Name:

transcriptional adaptor 3 (NGG1 homolog, yeast)-like

Calculated MW:

41 kDa

Observed MW:

49 kDa

Purification Method:

Antigen affinity purification

Recommended Dilutions:

WB 1:1000-1:9000

IHC 1:20-1:200

## Applications

Tested Applications:

WB, IHC, ELISA

Cited Applications:

WB

Species Specificity:

human, mouse

Cited Species:

human

**Note-IHC: suggested antigen retrieval with TE buffer pH 9.0; (\*) Alternatively, antigen retrieval may be performed with citrate buffer pH 6.0**

Positive Controls:

WB : HeLa cells, NIH/3T3 cells, human brain tissue, Jurkat cells

IHC : human prostate cancer tissue,

## Background Information

TADA3 is a subunit of 2 histone acetyltransferase complexes: the ADA2A (TADA2A)-containing (ATAC) complex and the SPT3 (SUPT3H)-TAF9-GCN5 (KAT2A)/PCAF (KAT2B) acetylase (STAGA) complex. The ATAC complex is a complex with histone acetyltransferase activity on histones H3 and H4, and the PCAF complex is capable of efficiently acetylating histones in a nucleosomal context. TADA3 is also known as a coactivator for p53/TP53-dependent transcriptional activation.

## Notable Publications

Author	Pubmed ID	Journal	Application
Siyuan Sun	38001062	Nat Commun	WB

## Storage

Storage:

Store at -20°C. Stable for one year after shipment.

Storage Buffer:

PBS with 0.02% sodium azide and 50% glycerol, pH7.3

Aliquoting is unnecessary for -20°C storage

For technical support and original validation data for this product please contact:

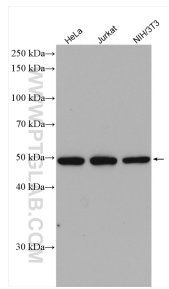
T: 4006900926

E: [Proteintech-CN@ptglab.com](mailto:Proteintech-CN@ptglab.com)

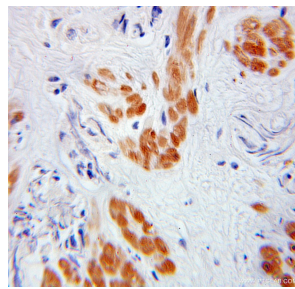
W: [ptgcn.com](http://ptgcn.com)

This product is exclusively available under Proteintech Group brand and is not available to purchase from any other manufacturer.

## Selected Validation Data



Various lysates were subjected to SDS PAGE followed by western blot with 10839-1-AP (TADA3L antibody) at dilution of 1:4500 incubated at room temperature for 1.5 hours.



Immunohistochemical analysis of paraffin-embedded human prostate cancer using 10839-1-AP (TADA3L antibody) at dilution of 1:100 (under 10x lens).