

For Research Use Only

# Cytokeratin 18 Polyclonal antibody, PBS Only

Catalog Number: 10830-1-PBS



## Basic Information

**Catalog Number:**

10830-1-PBS

**Concentration:**

1000 ug/ml

**Source:**

Rabbit

**Isotype:**

IgG

**Immunogen Catalog Number:**

AG1260

**GenBank Accession Number:**

BC000180

**GeneID (NCBI):**

3875

**UNIPROT ID:**

P05783

**Full Name:**

keratin 18

**Calculated MW:**

48 kDa

**Observed MW:**

48 kDa

**Purification Method:**

Antigen affinity purification

## Applications

**Tested Applications:**

WB, IHC, IF/ICC, FC (Intra), IP, ELISA

**Species Specificity:**

human, mouse, rat

## Background Information

Keratins are a large family of proteins that form the intermediate filament cytoskeleton of epithelial cells, which are classified into two major sequence types. Type I keratins are a group of acidic intermediate filament proteins, including K9-K23, and the hair keratins Ha1-Ha8. Type II keratins are the basic or neutral counterparts to the acidic type I keratins, including K1-K8, and the hair keratins, Hb1-Hb6. KRT18, also named as CYK18, PIG46 and K18, is the most commonly found members of the intermediate filament gene family. KRT18 is a type I keratin which is found primarily in non squamous epithelia and is present in a majority of adenocarcinomas and ductal carcinomas but not in squamous cell carcinomas.

## Storage

**Storage:**

Store at -80°C.

**The product is shipped with ice packs. Upon receipt, store it immediately at -80°C**

**Storage Buffer:**

PBS Only

For technical support and original validation data for this product please contact:

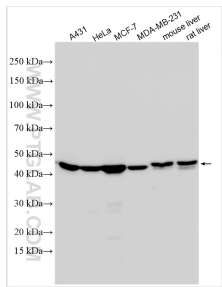
T: 4006900926

E: [Proteintech-CN@ptglab.com](mailto:Proteintech-CN@ptglab.com)

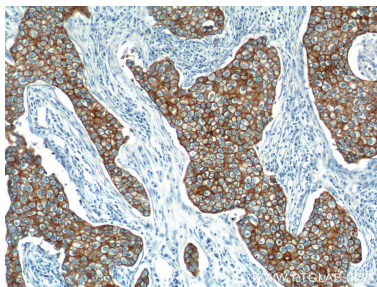
W: [ptgcn.com](http://ptgcn.com)

**This product is exclusively available under Proteintech Group brand and is not available to purchase from any other manufacturer.**

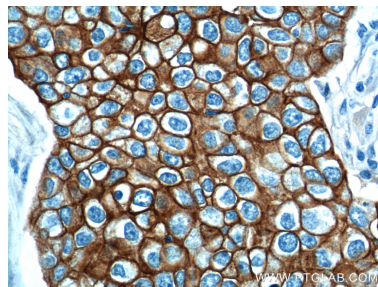
Selected Validation Data



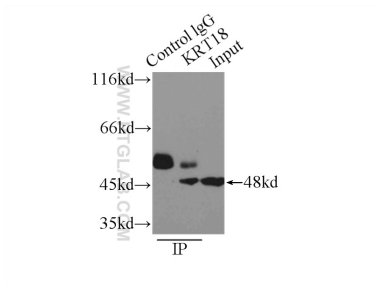
Various lysates were subjected to SDS PAGE followed by western blot with 10830-1-AP (Cytokeratin 18 antibody) at dilution of 1:50000 incubated at room temperature for 1.5 hours. This data was developed using the same antibody clone with 10830-1-PBS in a different storage buffer formulation.



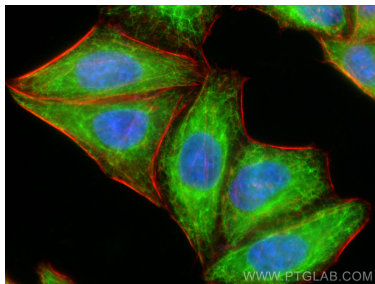
Immunohistochemical analysis of paraffin-embedded human breast cancer tissue slide using 10830-1-AP (Cytokeratin 18 antibody at dilution of 1:1000 (under 10x lens). This data was developed using the same antibody clone with 10830-1-PBS in a different storage buffer formulation.



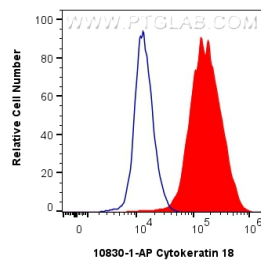
Immunohistochemical analysis of paraffin-embedded human breast cancer tissue slide using 10830-1-AP (Cytokeratin 18 antibody at dilution of 1:1000 (under 40x lens). This data was developed using the same antibody clone with 10830-1-PBS in a different storage buffer formulation.



IP result of anti-Cytokeratin 18 (IP:10830-1-AP, 3ug; Detection:10830-1-AP 1:2000) with A431 cells lysate 3300ug. This data was developed using the same antibody clone with 10830-1-PBS in a different storage buffer formulation.



Immunofluorescent analysis of (-20°C Ethanol) fixed HepG2 cells using Cytokeratin 18 antibody (10830-1-AP) at dilution of 1:400 and CoraLite®488-Conjugated Goat Anti-Rabbit IgG(H+L) (SA00013-2), CL594-phalloidin (red). This data was developed using the same antibody clone with 10830-1-PBS in a different storage buffer formulation.



1x10<sup>6</sup> HeLa cells were intracellularly stained with 0.8 ug Cytokeratin 18 Polyclonal antibody (10830-1-AP) and CoraLite®488-Conjugated AffiniPure Goat Anti-Rabbit IgG(H+L) (SA00013-2)(red), or 0.8 ug Rabbit IgG control Rabbit PolyAb (30000-0-AP) (blue). Cells were fixed with 4% PFA and permeabilized with Flow Cytometry Perm Buffer (PF00011-C). This data was developed using the same antibody clone with 10830-1-PBS in a different storage buffer formulation.