

For Research Use Only

SNAP23 Polyclonal antibody

Catalog Number: 10825-1-AP

Featured Product

22 Publications



Basic Information

Catalog Number:

10825-1-AP

Concentration:

1200 ug/ml

Source:

Rabbit

Isotype:

IgG

Immunogen Catalog Number:

AG1269

GenBank Accession Number:

BC000148

GeneID (NCBI):

8773

UNIPROT ID:

O00161

Full Name:

synaptosomal-associated protein,
23kDa

Calculated MW:

23 kDa

Observed MW:

23-25 kDa

Purification Method:

Antigen affinity purification

Recommended Dilutions:

WB 1:500-1:2000

IP 0.5-4.0 ug for 1.0-3.0 mg of total
protein lysate

IHC 1:400-1:2000

Applications

Tested Applications:

WB, IHC, IP, ELISA

Cited Applications:

WB, IHC, IF, CoIP

Species Specificity:

human, mouse, rat

Cited Species:

human, mouse, rat, goat

**Note-IHC: suggested antigen retrieval with
TE buffer pH 9.0; (*) Alternatively, antigen
retrieval may be performed with citrate
buffer pH 6.0**

Positive Controls:

WB : HeLa cells, HepG2 cells

IP : HeLa cells,

IHC : human placenta tissue, human prostate cancer
tissue

Background Information

Notable Publications

Author	Pubmed ID	Journal	Application
Chengdong Liu	33110233	Oncogene	WB
Yonglu Che	31712554	Nat Commun	WB, IF
Hana Kimura	29549094	J Lipid Res	WB

Storage

Storage:

Store at -20°C. Stable for one year after shipment.

Storage Buffer:

PBS with 0.02% sodium azide and 50% glycerol pH 7.3.

Aliquoting is unnecessary for -20°C storage

For technical support and original validation data for this product please contact:

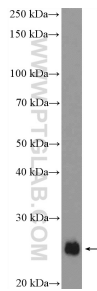
T: 4006900926

E: Proteintech-CN@ptglab.com

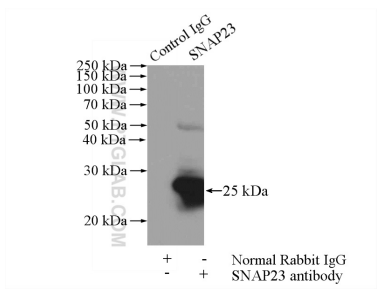
W: ptgcn.com

**This product is exclusively available under Proteintech
Group brand and is not available to purchase from any
other manufacturer.**

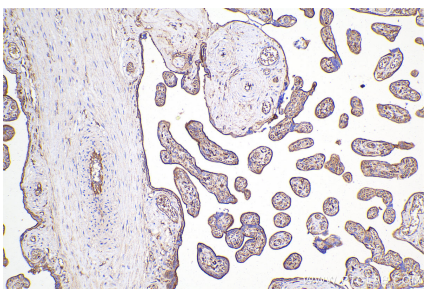
Selected Validation Data



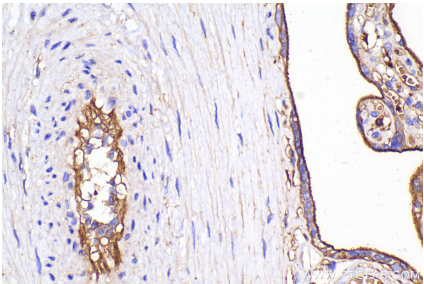
HeLa cells were subjected to SDS PAGE followed by western blot with 10825-1-AP (SNAP23 Antibody) at dilution of 1:1000 incubated at room temperature for 1.5 hours.



IP result of anti-SNAP23 (IP:10825-1-AP, 4ug; Detection:10825-1-AP 1:500) with HeLa cells lysate 880ug.



Immunohistochemical analysis of paraffin-embedded human placenta tissue slide using 10825-1-AP (SNAP23 antibody) at dilution of 1:1000 (under 10x lens). Heat mediated antigen retrieval with Tris-EDTA buffer (pH 9.0).



Immunohistochemical analysis of paraffin-embedded human placenta tissue slide using 10825-1-AP (SNAP23 antibody) at dilution of 1:1000 (under 40x lens). Heat mediated antigen retrieval with Tris-EDTA buffer (pH 9.0).