

For Research Use Only

# TPT1 Polyclonal antibody

Catalog Number: 10824-1-AP

Featured Product

8 Publications



## Basic Information

### Catalog Number:

10824-1-AP

### Size:

600 ug/ml

### Source:

Rabbit

### Isotype:

IgG

### Immunogen Catalog Number:

AG1268

### GenBank Accession Number:

BC003352

### GeneID (NCBI):

7178

### UNIPROT ID:

P13693

### Full Name:

tumor protein, translationally-controlled 1

### Calculated MW:

22 kDa

### Observed MW:

22-25 kDa

### Purification Method:

Antigen affinity purification

### Recommended Dilutions:

WB 1:1000-1:8000

IP 0.5-4.0 ug for 1.0-3.0 mg of total protein lysate

IHC 1:1000-1:4000

IF/ICC 1:200-1:800

## Applications

### Tested Applications:

WB, IHC, IF/ICC, IP, ELISA

### Cited Applications:

WB, IHC, IF, IP

### Species Specificity:

human, mouse, rat

### Cited Species:

human, mouse, rat, pig

**Note-IHC: suggested antigen retrieval with TE buffer pH 9.0; (\*) Alternatively, antigen retrieval may be performed with citrate buffer pH 6.0**

### Positive Controls:

WB : A431 cells, mouse placenta tissue, MCF-7 cells

IP : human placenta tissue,

IHC : human colon cancer tissue,

IF/ICC : HeLa cells,

## Background Information

The translationally controlled tumor protein (TPT1, also known as TCTP) is a highly conserved, abundantly expressed protein associated with cell growth and apoptosis regulation. It is overexpressed in most tumor cells and its down-regulation decreases the viability of those cells. This antibody detected 22-25 kDa TPT1 in lysates. An additional band around 50 kDa can also be observed occasionally, possibly representing the dimer form of TPT1.

## Notable Publications

Author	Pubmed ID	Journal	Application
Nicolas Fischer	33259807	Chem Biol Interact	WB
Dongrong Zhu	33667688	Pharmacol Res	WB
Staflin Karin K	19558675	BMC Cancer	WB,IHC

## Storage

### Storage:

Store at -20°C. Stable for one year after shipment.

### Storage Buffer:

PBS with 0.02% sodium azide and 50% glycerol pH 7.3.

Aliquoting is unnecessary for -20°C storage

For technical support and original validation data for this product please contact:

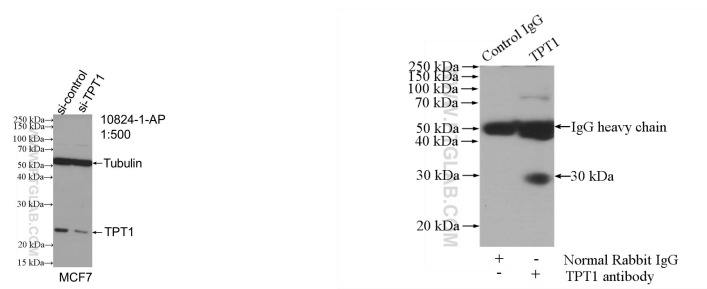
T: 4006900926

E: [Proteintech-CN@ptglab.com](mailto:Proteintech-CN@ptglab.com)

W: [ptgcn.com](http://ptgcn.com)

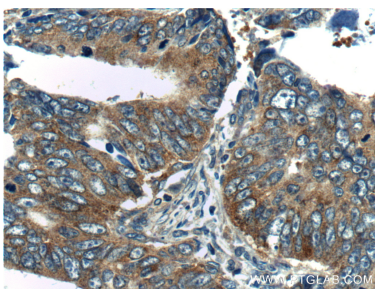
**This product is exclusively available under Proteintech Group brand and is not available to purchase from any other manufacturer.**

Selected Validation Data

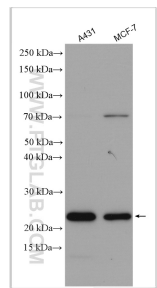


WB result of TPT1 antibody (10824-1-AP; 1:500; incubated at room temperature for 1.5 hours) with sh-Control and sh-TPT1 transfected MCF-7 cells.

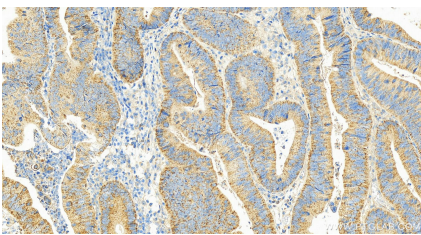
IP result of anti-TPT1 (IP:10824-1-AP, 4µg; Detection:10824-1-AP 1:500) with human placenta tissue lysate 1520µg.



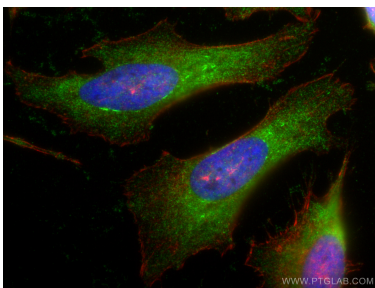
Immunohistochemical analysis of paraffin-embedded human colon cancer tissue slide using 10824-1-AP (TPT1 Antibody) at dilution of 1:200 (under 40x lens).



Various lysates were subjected to SDS PAGE followed by western blot with 10824-1-AP (TPT1 antibody) at dilution of 1:4000 incubated at room temperature for 1.5 hours.



Immunohistochemical analysis of paraffin-embedded human colon cancer tissue slide using 10824-1-AP (TPT1 antibody) at dilution of 1:2000 (under 20x lens). Heat mediated antigen retrieval with Tris-EDTA buffer (pH 9.0).



Immunofluorescent analysis of (-20°C Ethanol) fixed HeLa cells using TPT1 antibody (10824-1-AP) at dilution of 1:400 and CoraLite®488-Conjugated AffiniPure Goat Anti-Rabbit IgG(H+L), CL594-Phalloidin (red).