

For Research Use Only

# KPNA2 Polyclonal antibody

Catalog Number: 10819-1-AP

Featured Product

46 Publications



## Basic Information

Catalog Number:

10819-1-AP

Concentration:

240 µg/ml

Source:

Rabbit

Isotype:

IgG

Immunogen Catalog Number:

AG1153

GenBank Accession Number:

BC005978

GeneID (NCBI):

3838

UNIPROT ID:

P52292

Full Name:

karyopherin alpha 2 (RAG cohort 1, importin alpha 1)

Calculated MW:

57.8 kDa

Observed MW:

55-58 kDa

Purification Method:

Antigen affinity purification

Recommended Dilutions:

WB: 1:500-1:3000

IHC: 1:20-1:400

IF/ICC: 1:50-1:500

## Applications

Tested Applications:

WB, IHC, IF/ICC, ELISA

Cited Applications:

WB, IHC, IF, IP, CoIP, ChIP

Species Specificity:

human, mouse, rat

Cited Species:

human, mouse, pig

**Note-IHC: suggested antigen retrieval with TE buffer pH 9.0; (\*) Alternatively, antigen retrieval may be performed with citrate buffer pH 6.0**

Positive Controls:

WB : HepG2 cells, Jurkat cells, Raji cells

IHC : human colon cancer tissue,

IF/ICC : HepG2 cells,

## Background Information

KPNA2 (karyopherin  $\alpha$  2) is a nuclear import factor involved in the nucleocytoplasmic transport system. It is functionally involved in the tumor progression and is elevated in multiple cancers. KPNA2 expression may be a useful prognostic biomarker to monitor cancer prognosis.

## Notable Publications

Author	Pubmed ID	Journal	Application
Yi-Chao Liang	34508688	Am J Pathol	WB
Rui Shi	31487736	Gynecol Obstet Invest	WB
Hai-Ting Liu	34608273	Cell Death Differ	WB, IP

## Storage

Storage:

Store at -20°C. Stable for one year after shipment.

Storage Buffer:

PBS with 0.02% sodium azide and 50% glycerol, pH7.3

Aliquoting is unnecessary for -20°C storage

For technical support and original validation data for this product please contact:

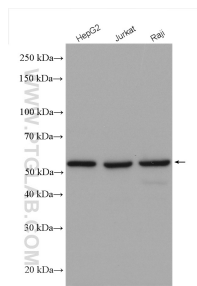
T: 4006900926

E: [Proteintech-CN@ptglab.com](mailto:Proteintech-CN@ptglab.com)

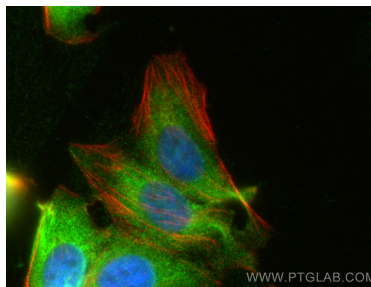
W: [ptgcn.com](http://ptgcn.com)

**This product is exclusively available under Proteintech Group brand and is not available to purchase from any other manufacturer.**

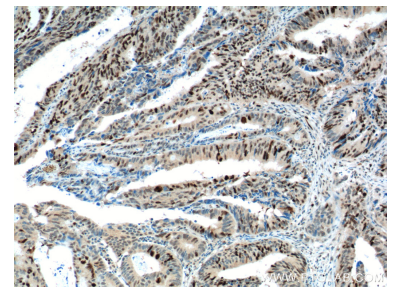
## Selected Validation Data



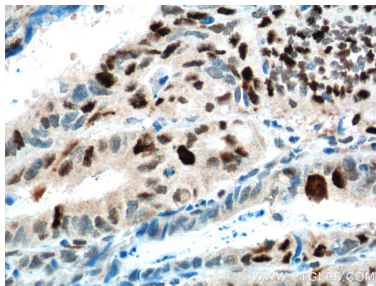
Various lysates were subjected to SDS PAGE followed by western blot with 10819-1-AP (KPNA2 antibody) at dilution of 1:1500 incubated at room temperature for 1.5 hours.



Immunofluorescent analysis of (4% PFA) fixed HepG2 cells using KPNA2 antibody (10819-1-AP) at dilution of 1:200 and CoraLite®488-Conjugated Goat Anti-Rabbit IgG(H+L), CL594-phalloidin (red).



Immunohistochemical analysis of paraffin-embedded human colon cancer tissue slide using 10819-1-AP (KPNA2 Antibody) at dilution of 1:200 (under 10x lens). Heat mediated antigen retrieval with Tris-EDTA buffer (pH 9.0).



Immunohistochemical analysis of paraffin-embedded human colon cancer tissue slide using 10819-1-AP (KPNA2 Antibody) at dilution of 1:200 (under 40x lens). Heat mediated antigen retrieval with Tris-EDTA buffer (pH 9.0).