

# SMARCE1 Polyclonal antibody

Catalog Number: 10814-1-AP

1 Publications

## Basic Information

## Catalog Number:

10814-1-AP

## Size:

900 µg/ml

## Source:

Rabbit

## Isotype:

IgG

## Immunogen Catalog Number:

AG1161

## GenBank Accession Number:

BC007082

## GeneID (NCBI):

6605

## UNIPROT ID:

Q969G3

## Full Name:

SWI/SNF related, matrix associated, actin dependent regulator of chromatin, subfamily e, member 1

## Calculated MW:

47 kDa

## Observed MW:

50-55 kDa

## Purification Method:

Antigen affinity purification

## Recommended Dilutions:

WB 1:500-1:2000

IP 0.5-4.0 µg for 1.0-3.0 mg of total protein lysate

IHC 1:50-1:500

## Applications

## Tested Applications:

IHC, IP, WB, ELISA

## Cited Applications:

WB

## Species Specificity:

human

## Cited Species:

mouse

**Note-IHC: suggested antigen retrieval with TE buffer pH 9.0; (\*) Alternatively, antigen retrieval may be performed with citrate buffer pH 6.0**

## Positive Controls:

WB: Jurkat cells, HEK-293 cells, HeLa cells, MCF-7 cells

IP: HEK-293 cells,

IHC: human prostate cancer tissue,

## Background Information

Via antagonizing chromatin-mediated transcriptional repression, the SWI/SNF complex in *S. cerevisiae* and *Drosophila* is thought to facilitate transcriptional activation of specific genes. The BRG1/brm-associated factors, or SMARCE1, complex in mammals is functionally related to SWI/SNF and consists of 9 to 12 subunits, some of which are homologous to SWI/SNF subunits. It contains a DNA-binding HMG domain and performs multiple biological functions, including DNA-, protein- and chromatin-binding, transcription coactivating activity, chromatin modification, DNA-dependent negative regulation of transcription, regulation of transcription of the RNA polymerase II promoter. In addition, SMARCE1, as an ER (estrogen receptor) subtype-selective modulator, regulates ER mediated transcription in a ligand-dependent manner and also directly binds to AR (androgen receptor) to alter its activity. The calculated molecular weight of SMARCE1 is 47 kDa, but modified SMARCE1 is about 55 kDa.

## Notable Publications

Author	Pubmed ID	Journal	Application
Kai Song	37810250	iScience	WB

## Storage

## Storage:

Store at -20°C. Stable for one year after shipment.

## Storage Buffer:

PBS with 0.02% sodium azide and 50% glycerol pH 7.3.

Aliquoting is unnecessary for -20°C storage

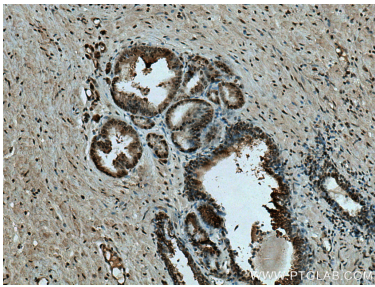
For technical support and original validation data for this product please contact:

T: 4006900926

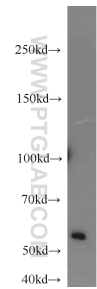
E: [Proteintech-CN@ptglab.com](mailto:Proteintech-CN@ptglab.com)W: [ptgcn.com](http://ptgcn.com)

**This product is exclusively available under Proteintech Group brand and is not available to purchase from any other manufacturer.**

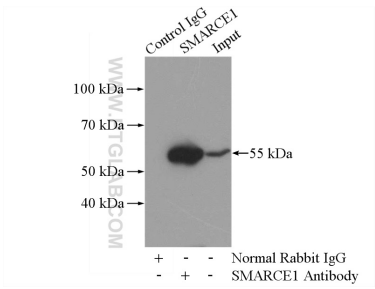
Selected Validation Data



Immunohistochemical analysis of paraffin-embedded human prostate cancer tissue slide using 10814-1-AP (SMARCE1 antibody) at dilution of 1:200 (under 10x lens). Heat mediated antigen retrieval with Tris-EDTA buffer (pH 9.0).



Jurkat cells were subjected to SDS PAGE followed by western blot with 10814-1-AP (SMARCE1 antibody) at dilution of 1:1000 incubated at room temperature for 1.5 hours.



IP result of anti-SMARCE1 (IP:10814-1-AP, 4ug; Detection:10814-1-AP 1:800) with HEK-293 cells lysate 880ug.