

For Research Use Only

ARHI Polyclonal antibody

Catalog Number: 10811-2-AP

1 Publications



Basic Information

Catalog Number:

10811-2-AP

Size:

600 µg/ml

Source:

Rabbit

Isotype:

IgG

Immunogen Catalog Number:

AG1123

GenBank Accession Number:

BC005362

GeneID (NCBI):

9077

UNIPROT ID:

O95661

Full Name:

DIRAS family, GTP-binding RAS-like 3

Calculated MW:

26 kDa

Observed MW:

26-30 kDa

Purification Method:

Antigen affinity purification

Recommended Dilutions:

IHC 1:50-1:500

Applications

Tested Applications:

IHC, ELISA

Cited Applications:

WB, IHC

Species Specificity:

human, mouse, rat

Cited Species:

human

Note-IHC: suggested antigen retrieval with TE buffer pH 9.0; (*) Alternatively, antigen retrieval may be performed with citrate buffer pH 6.0

Positive Controls:

IHC : human pancreas cancer tissue,

Background Information

Notable Publications

Author	Pubmed ID	Journal	Application
Shi-Xing Zheng	39236963	Int J Biol Macromol	WB,IHC

Storage

Storage:

Store at -20°C. Stable for one year after shipment.

Storage Buffer:

PBS with 0.02% sodium azide and 50% glycerol pH 7.3.

Aliquoting is unnecessary for -20°C storage

For technical support and original validation data for this product please contact:

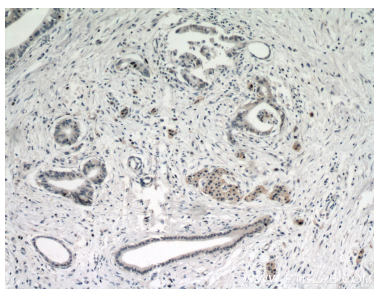
T: 4006900926

E: Proteintech-CN@ptglab.com

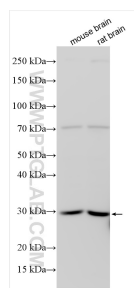
W: ptgcn.com

This product is exclusively available under Proteintech Group brand and is not available to purchase from any other manufacturer.

Selected Validation Data



Immunohistochemical analysis of paraffin-embedded human pancreas cancer using 10811-2-AP (ARHI antibody) at dilution of 1:50 (under 10x lens).



Various lysates were subjected to SDS PAGE followed by western blot with 10811-2-AP (ARHI antibody) at dilution of 1:800 incubated at room temperature for 1.5 hours.