

MTHFD1 Polyclonal antibody

Catalog Number: 10794-1-AP

Featured Product

12 Publications

Basic Information

Catalog Number:

10794-1-AP

Size:

450 µg/ml

Source:

Rabbit

Isotype:

IgG

Immunogen Catalog Number:

AG1225

GenBank Accession Number:

BC009806

GeneID (NCBI):

4522

UNIPROT ID:

P11586

Full Name:

 methylenetetrahydrofolate
 dehydrogenase (NADP+ dependent) 1,
 methenyltetrahydrofolate
 cyclohydrolase,
 formyltetrahydrofolate synthetase

Calculated MW:

101 kDa

Observed MW:

101 kDa

Purification Method:

Antigen affinity purification

Recommended Dilutions:

WB 1:500-1:2000

IP 0.5-4.0 µg for 1.0-3.0 mg of total
protein lysate

IHC 1:50-1:500

Applications

Tested Applications:

IHC, IP, WB, ELISA

Cited Applications:

IHC, WB

Species Specificity:

human, mouse

Cited Species:

human, mouse

Note-IHC: suggested antigen retrieval with
**TE buffer pH 9.0; (*) Alternatively, antigen
 retrieval may be performed with citrate
 buffer pH 6.0**

Positive Controls:

 WB : HEK-293 cells, human brain tissue, HuH-7 cells, K-
 562 cells, mouse kidney tissue

IP : mouse kidney tissue,

IHC : human liver cancer tissue, human colon cancer
tissue

Background Information

MTHFD1 is a trifunctional enzyme involved in the pathway tetrahydrofolate interconversion, which is part of One-carbon metabolism. MTHFD1 is associated with HCC and CRC progression. It has been reported that MTHFD-deficient patient fibroblasts exhibit enriched MTHFD1 in the nucleus which is critical for de novo dTMP synthesis. (PMID: 31133746, 30997850, 31421459, 25548164)

Notable Publications

Author	Pubmed ID	Journal	Application
Costas Koufaris	30275950	Cancer Metab	WB
Danielle E Anderson	34544865	Proc Natl Acad Sci U S A	WB
Li Cui	34533844	J Pineal Res	WB

Storage

Storage:

Store at -20°C. Stable for one year after shipment.

Storage Buffer:

PBS with 0.02% sodium azide and 50% glycerol pH 7.3.

Aliquoting is unnecessary for -20°C storage

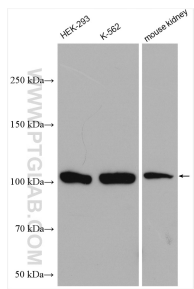
For technical support and original validation data for this product please contact:

T: 4006900926

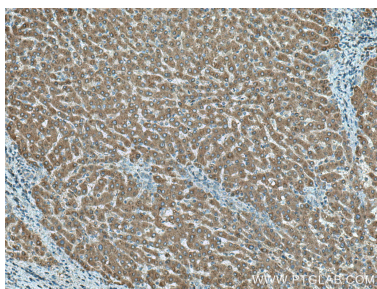
E: Proteintech-CN@ptglab.comW: ptgcn.com

**This product is exclusively available under Proteintech
 Group brand and is not available to purchase from any
 other manufacturer.**

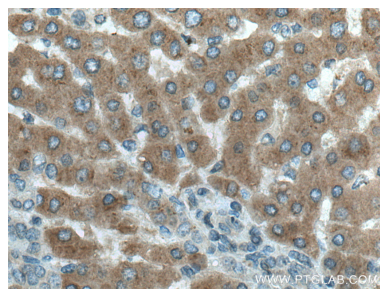
Selected Validation Data



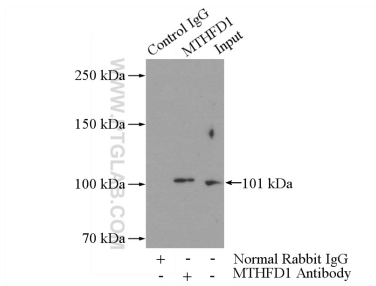
Various lysates were subjected to SDS PAGE followed by western blot with 10794-1-AP (MTHFD1 antibody) at dilution of 1:1000 incubated at room temperature for 1.5 hours.



Immunohistochemical analysis of paraffin-embedded human liver cancer tissue slide using 10794-1-AP (MTHFD1 antibody) at dilution of 1:200 (under 10x lens). Heat mediated antigen retrieval with Tris-EDTA buffer (pH 9.0).



Immunohistochemical analysis of paraffin-embedded human liver cancer tissue slide using 10794-1-AP (MTHFD1 antibody) at dilution of 1:200 (under 40x lens). Heat mediated antigen retrieval with Tris-EDTA buffer (pH 9.0).



IP result of anti-MTHFD1 (IP:10794-1-AP, 5ug; Detection:10794-1-AP 1:600) with mouse kidney tissue lysate 4000ug.