

For Research Use Only

# PRIM1 Polyclonal antibody

Catalog Number: 10773-1-AP **10 Publications**



## Basic Information

### Catalog Number:

10773-1-AP

### Size:

133 µg/ml

### Source:

Rabbit

### Isotype:

IgG

### Immunogen Catalog Number:

AG1124

### GenBank Accession Number:

BC005266

### GeneID (NCBI):

5557

### UNIPROT ID:

P49642

### Full Name:

primase, DNA, polypeptide 1 (49kDa)

### Calculated MW:

50 kDa

### Observed MW:

50 kDa

### Purification Method:

Antigen affinity purification

### Recommended Dilutions:

WB 1:500-1:3000

IP 0.5-4.0 µg for 1.0-3.0 mg of total protein lysate

IHC 1:20-1:200

IF/ICC 1:50-1:500

## Applications

### Tested Applications:

WB, IHC, IF/ICC, IP, ELISA

### Cited Applications:

WB, IHC

### Species Specificity:

human, mouse, rat

### Cited Species:

human, mouse

### Positive Controls:

**WB** : HeLa cells, Sp2/O cells, K-562 cells, HepG2 cells, Jurkat cells

**IP** : HeLa cells,

**IHC** : human lymphoma tissue, human thyroid cancer tissue

**IF/ICC** : HeLa cells,

**Note-IHC: suggested antigen retrieval with TE buffer pH 9.0; (\*) Alternatively, antigen retrieval may be performed with citrate buffer pH 6.0**

## Background Information

DNA replication in human cells is initiated by a complex apparatus containing a DNA polymerase-alpha/primase complex. Primase synthesizes oligoribonucleotides that serve as primers for the initiation of DNA synthesis. It plays a role in both the initiation of DNA replication and the synthesis of Okazaki fragments for lagging strand synthesis. PRIM1 is a subunit of this complex.

## Notable Publications

Author	Pubmed ID	Journal	Application
Arthur J Zaugg	34718732	Nucleic Acids Res	WB
Zachary Mirman	35316728	DNA Repair (Amst)	WB
Zachary Mirman	35027730	Nat Cell Biol	WB

## Storage

### Storage:

Store at -20°C. Stable for one year after shipment.

### Storage Buffer:

PBS with 0.02% sodium azide and 50% glycerol pH 7.3.

Aliquoting is unnecessary for -20°C storage

For technical support and original validation data for this product please contact:

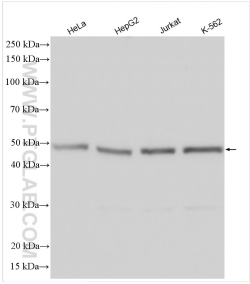
T: 4006900926

E: [Proteintech-CN@ptglab.com](mailto:Proteintech-CN@ptglab.com)

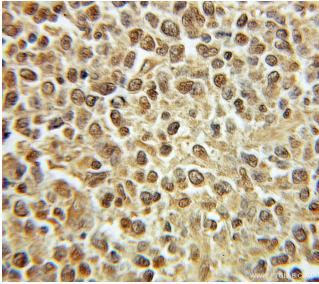
W: [ptgcn.com](http://ptgcn.com)

**This product is exclusively available under Proteintech Group brand and is not available to purchase from any other manufacturer.**

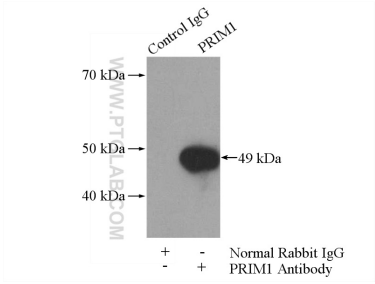
Selected Validation Data



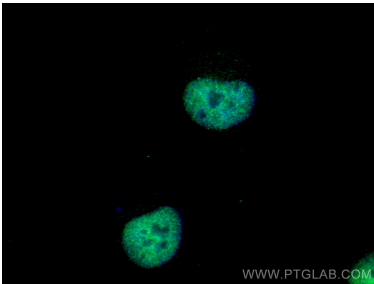
Various lysates were subjected to SDS PAGE followed by western blot with 10773-1-AP (PRIM1 antibody) at dilution of 1:1500 incubated at room temperature for 1.5 hours.



Immunohistochemical analysis of paraffin-embedded human lymphoma using 10773-1-AP (PRIM1 antibody) at dilution of 1:100 (under 10x lens).



IP result of anti-PRIM1 (IP:10773-1-AP, 4ug; Detection:10773-1-AP 1:300) with HeLa cells lysate 2800ug.



Immunofluorescent analysis of (4% PFA) fixed HeLa cells using PRIM1 antibody (10773-1-AP) at dilution of 1:200 and Coralite®488-Conjugated Goat Anti-Rabbit IgG(H+L).