

For Research Use Only

# MRE11 Polyclonal antibody, PBS Only

Catalog Number:10744-1-PBS



## Basic Information

Catalog Number:

10744-1-PBS

Source:

Rabbit

Isotype:

IgG

Immunogen Catalog Number:

AG1105

GenBank Accession Number:

BC005241

GeneID (NCBI):

4361

UNIPROT ID:

P49959

Full Name:

MRE11 meiotic recombination 11 homolog A (*S. cerevisiae*)

Calculated MW:

81 kDa

Observed MW:

81 kDa

Purification Method:

Antigen affinity purification

## Applications

Tested Applications:

WB, IHC, IP, Indirect ELISA

Species Specificity:

human, mouse, rat

## Background Information

Mre11 (meiotic recombination 11), also named as Mre11A, is a component of the MRN (MRE11/RAD50/NBS1) complex which is a versatile complex, playing a key role in the sensing, processing, and repair of DSBs. MRE11 possesses both endonuclease and 3'-5' exonuclease activity. It contains two DNA-binding domains (DBDs), enabling it to bind both single-stranded DNA (ssDNA) and double-stranded DNA (dsDNA). After DSBs, MRE11 is loaded onto DSBs sites and cleaves DNA by cooperating with CtIP (CtBP [C terminal binding protein] interacting protein) to initiate end resection. It's reported that MRE11 is over-expressed in breast cancers. (PMID:38128537; 22914783)

## Storage

Storage:

Store at -80°C.

**The product is shipped with ice packs. Upon receipt, store it immediately at -80°C**

Storage Buffer:

PBS only, pH7.3

For technical support and original validation data for this product please contact:

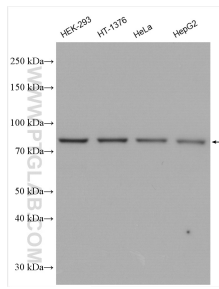
T: 4006900926

E: Proteintech-CN@ptglab.com

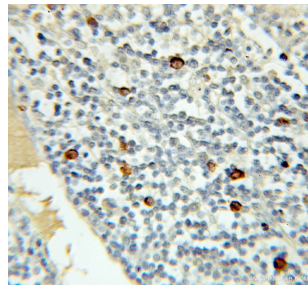
W: ptgcn.com

**This product is exclusively available under Proteintech Group brand and is not available to purchase from any other manufacturer.**

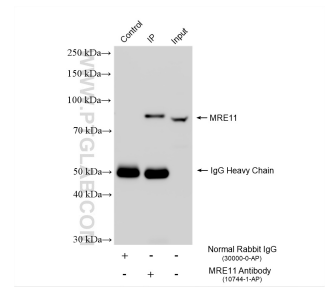
## Selected Validation Data



Various lysates were subjected to SDS PAGE followed by western blot with 10744-1-AP (MRE11 antibody) at dilution of 1:1000 incubated at room temperature for 1.5 hours. This data was developed using the same antibody clone with 10744-1-PBS in a different storage buffer formulation.



Immunohistochemical analysis of paraffin-embedded human lymphoma using 10744-1-AP (MRE11 antibody) at dilution of 1:50 (under 10x lens). This data was developed using the same antibody clone with 10744-1-PBS in a different storage buffer formulation.



IP result of anti-MRE11 (IP:10744-1-AP, 4ug; Detection:10744-1-AP 1:1000) with HeLa cells lysate 960 ug. This data was developed using the same antibody clone with 10744-1-PBS in a different storage buffer formulation.