

For Research Use Only

PRPF4 Polyclonal antibody

Catalog Number: 10728-1-AP **3 Publications**



Basic Information

Catalog Number: 10728-1-AP	GenBank Accession Number: BC001588	Purification Method: Antigen affinity purification
Size: 500 µg/ml	GeneID (NCBI): 9128	Recommended Dilutions: WB 1:1000-1:4000 IHC 1:10-1:100
Source: Rabbit	UNIPROT ID: O43172	
Isotype: IgG	Full Name: PRP4 pre-mRNA processing factor 4 homolog (yeast)	
Immunogen Catalog Number: AG1193	Calculated MW: 58 kDa	
	Observed MW: 58 kDa	

Applications

Tested Applications: IHC, WB, ELISA	Positive Controls:
Cited Applications: WB	WB: HeLa cells, Raji cells, HEK-293 cells, HepG2 cells, K-562 cells
Species Specificity: human	IHC: human ovary tumor tissue,
Cited Species: human, mouse	

Note-IHC: suggested antigen retrieval with TE buffer pH 9.0; (*) Alternatively, antigen retrieval may be performed with citrate buffer pH 6.0

Background Information

PRPF4, also named as U4/U6 small nuclear ribonucleoprotein Prp4, is a 522 amino acid protein, which contains seven WD repeats. PRPF4 localizes in the Nucleus speckle. PRPF4 participates in pre-mRNA splicing and is a part of the U4/U5/U6 tri-snRNP complex, one of the building blocks of the spliceosome. PRPF4-mediated phosphorylation of KLF13 plays a role in the regulation of CCL5 expression in T lymphocytes

Notable Publications

Author	Pubmed ID	Journal	Application
Tanackovic Goranka G	21378395	Hum Mol Genet	WB
Bangming Jin	37395406	Nucleic Acids Res	WB
Li Ming M	20026604	J Biol Chem	WB

Storage

Storage:
Store at -20°C. Stable for one year after shipment.
Storage Buffer:
PBS with 0.02% sodium azide and 50% glycerol pH 7.3.
Aliquoting is unnecessary for -20°C storage

For technical support and original validation data for this product please contact:

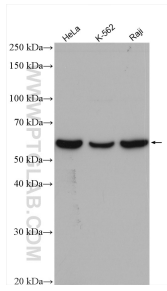
T: 4006900926

E: Proteintech-CN@ptglab.com

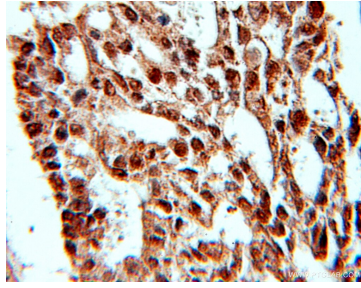
W: ptgcn.com

This product is exclusively available under Proteintech Group brand and is not available to purchase from any other manufacturer.

Selected Validation Data



Various lysates were subjected to SDS PAGE followed by western blot with 10728-1-AP (PRPF4 antibody) at dilution of 1:2000 incubated at room temperature for 1.5 hours.



Immunohistochemical analysis of paraffin-embedded human ovary tumor using 10728-1-AP (PRPF4 antibody) at dilution of 1:10 (under 10x lens).