

# Ferritin light chain Polyclonal antibody

Catalog Number: 10727-1-AP

Featured Product

206 Publications

## Basic Information

## Catalog Number:

10727-1-AP

## Source:

Rabbit

## Isotype:

IgG

## Immunogen Catalog Number:

AG1149

## GenBank Accession Number:

BC008439

## GeneID (NCBI):

2512

## UNIPROT ID:

P02792

## Full Name:

ferritin, light polypeptide

## Calculated MW:

19 kDa

## Observed MW:

18-20 kDa

## Purification Method:

Antigen affinity purification

## Recommended Dilutions:

WB: 1:2000-1:10000

IP: 0.5-4.0 ug for 1.0-3.0 mg of total protein lysate

IHC: 1:50-1:500

IF/ICC: 1:200-1:800

## Applications

## Tested Applications:

WB, IHC, IF/ICC, IP, ELISA

## Cited Applications:

WB, IHC, IF, IP, CoIP

## Species Specificity:

human, mouse, rat

## Cited Species:

human, mouse, rat, monkey, duck

**Note-IHC: suggested antigen retrieval with TE buffer pH 9.0; (\*) Alternatively, antigen retrieval may be performed with citrate buffer pH 6.0**

## Positive Controls:

**WB**: mouse liver tissue, human placenta tissue, mouse ovary tissue, mouse testis tissue, mouse spleen tissue, rat liver tissue

**IP**: mouse liver tissue,

**IHC**: human liver tissue, human liver cancer tissue, mouse spleen tissue, human spleen tissue

**IF/ICC**: A549 cells,

## Background Information

FTL belongs to the ferritin family. It stores iron in a soluble, non-toxic, readily available form. FTL is important for iron homeostasis. It plays a role in delivery of iron to cells. FTL mediates iron uptake in capsule cells of the developing kidney. Mutation of FTL will cause hereditary hyperferritinemia-cataract syndrome (HHCS) or neurodegeneration with brain iron accumulation type 3 (NBIA3). Ferritin light polypeptide (FTL) and ferritin heavy polypeptide (FTH1) were the main constituents the striatum and cerebellar cortex revealed.

## Notable Publications

Author	Pubmed ID	Journal	Application
Lalit Pukhrambam Singh	35187384	JOJ Ophthalmol	WB
Hailong Gong	36164395	Oxid Med Cell Longev	WB
Xiaopeng Cai	36094079	ACS Appl Mater Interfaces	WB

## Storage

## Storage:

Store at -20°C. Stable for one year after shipment.

## Storage Buffer:

PBS with 0.02% sodium azide and 50% glycerol, pH7.3

Aliquoting is unnecessary for -20°C storage

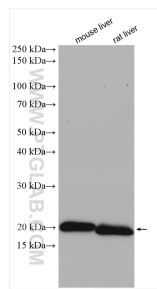
For technical support and original validation data for this product please contact:

T: 4006900926

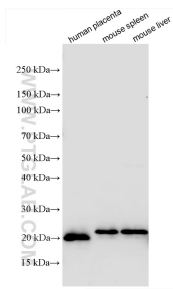
E: [Proteintech-CN@ptglab.com](mailto:Proteintech-CN@ptglab.com)W: [ptgcn.com](http://ptgcn.com)

**This product is exclusively available under Proteintech Group brand and is not available to purchase from any other manufacturer.**

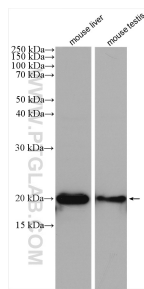
Selected Validation Data



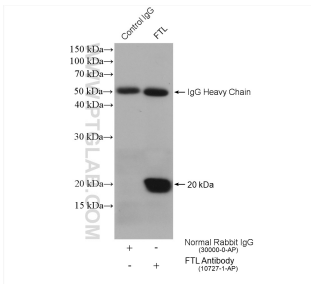
Various lysates were subjected to SDS PAGE followed by western blot with 10727-1-AP (Ferritin light chain antibody) at dilution of 1:5000 incubated at room temperature for 1.5 hours.



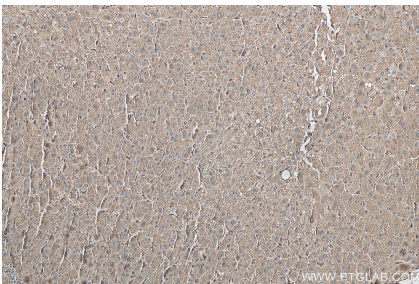
Various lysates were subjected to SDS PAGE followed by western blot with 10727-1-AP (Ferritin light chain antibody) at dilution of 1:1000 incubated at room temperature for 1.5 hours.



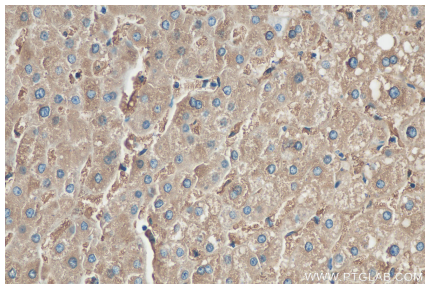
Various lysates were subjected to SDS PAGE followed by western blot with 10727-1-AP (Ferritin light chain antibody) at dilution of 1:1000 incubated at room temperature for 1.5 hours.



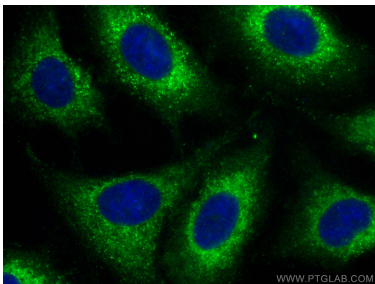
IP result of anti-Ferritin light chain (IP:10727-1-AP, 4ug; Detection:10727-1-AP 1:1000) with mouse liver tissue lysate 3040 ug.



Immunohistochemical analysis of paraffin-embedded human liver tissue slide using 10727-1-AP (Ferritin light chain antibody) at dilution of 1:200 (under 10x lens). Heat mediated antigen retrieval with Tris-EDTA buffer (pH 9.0).



Immunohistochemical analysis of paraffin-embedded human liver tissue slide using 10727-1-AP (Ferritin light chain antibody) at dilution of 1:200 (under 40x lens). Heat mediated antigen retrieval with Tris-EDTA buffer (pH 9.0).



Immunofluorescent analysis of (-20°C Methanol) fixed A549 cells using Ferritin light chain antibody (10727-1-AP) at dilution of 1:400 and CoraLite®488-Conjugated Goat Anti-Rabbit IgG(H+L) (SA00013-2).