

For Research Use Only

PDCD2 Polyclonal antibody

Catalog Number: 10725-1-AP

Featured Product

9 Publications



Basic Information

Catalog Number:

10725-1-AP

Size:

600 µg/ml

Source:

Rabbit

Isotype:

IgG

Immunogen Catalog Number:

AG1139

GenBank Accession Number:

BC008378

GeneID (NCBI):

5134

UNIPROT ID:

Q16342

Full Name:

programmed cell death 2

Calculated MW:

39 kDa

Observed MW:

37-39 kDa, 45 kDa

Purification Method:

Antigen affinity purification

Recommended Dilutions:

WB 1:500-1:1000

IP 0.5-4.0 µg for 1.0-3.0 mg of total protein lysate

IHC 1:20-1:200

Applications

Tested Applications:

IHC, IP, WB, ELISA

Cited Applications:

WB, IHC

Species Specificity:

human, mouse, zebrafish

Cited Species:

human, mouse, rat, zebrafish

Note-IHC: suggested antigen retrieval with TE buffer pH 9.0; (*) Alternatively, antigen retrieval may be performed with citrate buffer pH 6.0

Positive Controls:

WB : HeLa cells, H7ES cells, mouse liver tissue

IP : HeLa cells,

IHC : human ovary tumor tissue,

Background Information

Programmed Cell Death 2 (PDCD2) is widely expressed in embryonic and adult tissues but with undefined function yet. Recent observation uncovered its role in hematopoietic stem cell differentiation during development. Catalog# 10725-1-AP is a rabbit polyclonal antibody raised against full-length PDCD2 of human origin.

Notable Publications

Author	Pubmed ID	Journal	Application
Yanming Li	27734462	Br J Haematol	
Hua Liao	21873567	Mol Cell Proteomics	WB
Zhao Cui	35809766	Pharmacol Res	

Storage

Storage:

Store at -20°C. Stable for one year after shipment.

Storage Buffer:

PBS with 0.02% sodium azide and 50% glycerol pH 7.3.

Aliquoting is unnecessary for -20°C storage

For technical support and original validation data for this product please contact:

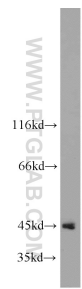
T: 4006900926

E: Proteintech-CN@ptglab.com

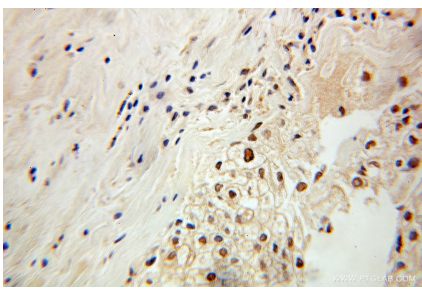
W: ptgcn.com

This product is exclusively available under Proteintech Group brand and is not available to purchase from any other manufacturer.

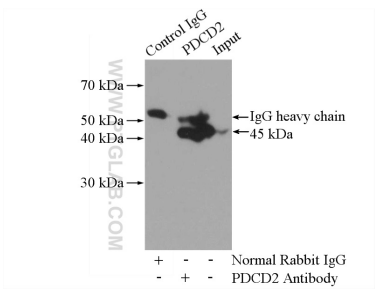
Selected Validation Data



HeLa cells were subjected to SDS PAGE followed by western blot with 10725-1-AP (PDCD2 antibody) at dilution of 1:800 incubated at room temperature for 1.5 hours.



Immunohistochemical analysis of paraffin-embedded human ovary tumor using 10725-1-AP (PDCD2 antibody) at dilution of 1:100 (under 10x lens).



IP result of anti-PDCD2 (IP:10725-1-AP, 4ug; Detection:10725-1-AP 1:500) with HeLa cells lysate 2800ug.