

For Research Use Only

# CSRP3 Polyclonal antibody

Catalog Number: 10721-1-AP

4 Publications



## Basic Information

Catalog Number:

10721-1-AP

Concentration:

500 ug/ml

Source:

Rabbit

Isotype:

IgG

Immunogen Catalog Number:

AG1136

GenBank Accession Number:

BC005900

GeneID (NCBI):

8048

UNIPROT ID:

P50461

Full Name:

cysteine and glycine-rich protein 3  
(cardiac LIM protein)

Calculated MW:

21 kDa

Observed MW:

21 kDa

Purification Method:

Antigen affinity purification

Recommended Dilutions:

WB 1:500-1:3000

IP 0.5-4.0 ug for 1.0-3.0 mg of total  
protein lysate

IHC 1:20-1:200

## Applications

Tested Applications:

WB, IHC, IP, ELISA

Cited Applications:

WB, IHC

Species Specificity:

human, mouse, rat

Cited Species:

human, mouse

**Note-IHC: suggested antigen retrieval with  
TE buffer pH 9.0; (\*) Alternatively, antigen  
retrieval may be performed with citrate  
buffer pH 6.0**

Positive Controls:

WB : mouse heart tissue, human heart tissue, rat heart  
tissue

IP : mouse heart tissue,

IHC : human heart tissue, human pancreas cancer  
tissue

## Background Information

CSRP3/MLP (cysteine-rich protein 3/muscle Lim protein), a member of the cysteine-rich protein family, is a muscle-specific LIM-only factor specifically expressed in skeletal muscle. The cytoplasmic CSRP3 serves as a scaffold protein that primarily interacts and co-localizes with different Z-disc components of myofibrils (PMID: 31979369, 17519359).

## Notable Publications

Author	Pubmed ID	Journal	Application
Hao Huang	34558151	J Gene Med	IHC
Aymeric Ravel-Chapuis	28369518	Hum Mol Genet	WB
Julia Straubinger	28138039	FASEB J	WB

## Storage

Storage:

Store at -20°C. Stable for one year after shipment.

Storage Buffer:

PBS with 0.02% sodium azide and 50% glycerol

Aliquoting is unnecessary for -20°C storage

For technical support and original validation data for this product please contact:

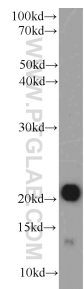
T: 4006900926

E: [Proteintech-CN@ptglab.com](mailto:Proteintech-CN@ptglab.com)

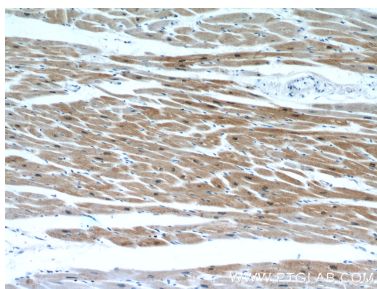
W: [ptgcn.com](http://ptgcn.com)

**This product is exclusively available under Proteintech Group brand and is not available to purchase from any other manufacturer.**

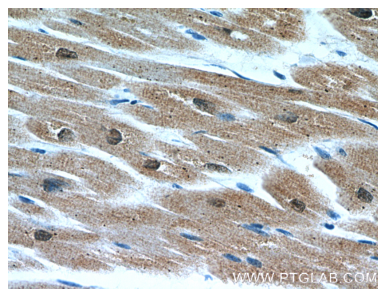
Selected Validation Data



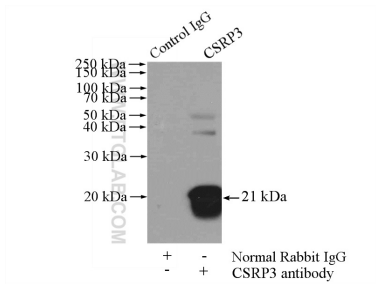
mouse heart tissue were subjected to SDS PAGE followed by western blot with 10721-1-AP (CSR3 antibody) at dilution of 1:2000 incubated at room temperature for 1.5 hours.



Immunohistochemical analysis of paraffin-embedded human heart using 10721-1-AP (CSR3 antibody) at dilution of 1:50 (under 10x lens).



Immunohistochemical analysis of paraffin-embedded human heart using 10721-1-AP (CSR3 antibody) at dilution of 1:50 (under 40x lens).



IP result of anti-CSR3 (IP:10721-1-AP, 4ug; Detection:10721-1-AP 1:2000) with mouse heart tissue lysate 4000ug.