

For Research Use Only

TPI1 Polyclonal antibody

Catalog Number: 10713-1-AP

Featured Product

39 Publications



Basic Information

Catalog Number:

10713-1-AP

Concentration:

500 µg/ml

Source:

Rabbit

Isotype:

IgG

Immunogen Catalog Number:

AG1175

GenBank Accession Number:

BC007086

GeneID (NCBI):

7167

UNIPROT ID:

P60174

Full Name:

triosephosphate isomerase 1

Calculated MW:

27 kDa

Observed MW:

27 kDa

Purification Method:

Antigen affinity purification

Recommended Dilutions:

WB 1:2000-1:12000

IP 0.5-4.0 µg for 1.0-3.0 mg of total protein lysate

Applications

Tested Applications:

WB, IP, ELISA

Cited Applications:

WB, IHC, IF, IP, CoIP

Species Specificity:

human, mouse, rat

Cited Species:

human, mouse, rat, pig, chicken, yeast, drosophila

Positive Controls:

WB : HEK-293 cells, A431 cells, HepG2 cells, rat liver tissue, rat kidney tissue, RAW 264.7 cells, mouse liver tissue, mouse kidney tissue, NIH/3T3 cells

IP : HEK-293 cells,

Background Information

TPI1 (Triosephosphate isomerase) is also named as TIM, TPI and belongs to the triosephosphate isomerase family. It is a key enzyme in cell metabolism that controls the glycolytic flow and energy production through the interconversion of dihydroxyacetone phosphate (DHAP) and D-glyceraldehyde 3-phosphate (G3P) (PMID:19251756). Defects in TPI1 are the cause of triosephosphate isomerase deficiency (TPI deficiency). It can exist as a homodimer (PMID:18562316).

Notable Publications

Author	Pubmed ID	Journal	Application
Sunada Khadka	36139163	Biomolecules	WB
Chelsea M Winters	29040005	DNA Cell Biol	WB
Valera Vladimir A VA	20975849	J Cancer	IHC

Storage

Storage:

Store at -20°C. Stable for one year after shipment.

Storage Buffer:

PBS with 0.02% sodium azide and 50% glycerol pH 7.3.

Aliquoting is unnecessary for -20°C storage

For technical support and original validation data for this product please contact:

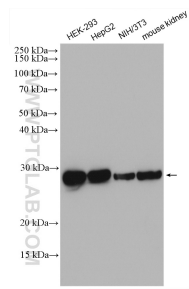
T: 4006900926

E: Proteintech-CN@ptglab.com

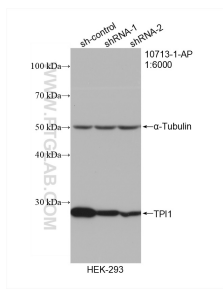
W: ptgcn.com

This product is exclusively available under Proteintech Group brand and is not available to purchase from any other manufacturer.

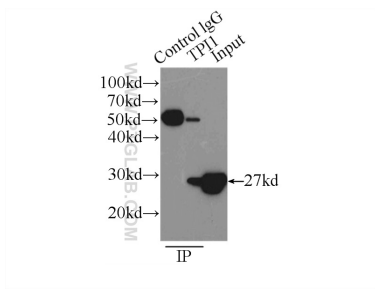
Selected Validation Data



Various lysates were subjected to SDS PAGE followed by western blot with 10713-1-AP (TPI1 antibody) at dilution of 1:6000 incubated at room temperature for 1.5 hours.



WB result of TPI1 antibody (10713-1-AP; 1:6000; incubated at room temperature for 1.5 hours) with sh-Control and sh-TPI1 transfected HEK-293 cells.



IP result of anti-TPI1 (IP:10713-1-AP, 3ug; Detection:10713-1-AP 1:1000) with HEK-293 cells lysate 2500ug.