

For Research Use Only

C1D Polyclonal antibody

Catalog Number: 10711-1-AP

1 Publications



Basic Information

Catalog Number:

10711-1-AP

Size:

750 µg/ml

Source:

Rabbit

Isotype:

IgG

Immunogen Catalog Number:

AG1121

GenBank Accession Number:

BC005235

GeneID (NCBI):

10438

UNIPROT ID:

Q13901

Full Name:

C1D nuclear receptor co-repressor

Calculated MW:

16 kDa

Purification Method:

Antigen affinity purification

Recommended Dilutions:

WB 1:200-1:1000

IP 0.5-4.0 µg for 1.0-3.0 mg of total protein lysate

IHC 1:50-1:500

Applications

Tested Applications:

IHC, IP, WB, ELISA

Cited Applications:

WB

Species Specificity:

human

Cited Species:

mouse

Note-IHC: suggested antigen retrieval with TE buffer pH 9.0; (*) Alternatively, antigen retrieval may be performed with citrate buffer pH 6.0

Positive Controls:

WB : DU 145 cells,

IP : DU 145 cells,

IHC : human prostate cancer tissue,

Background Information

Notable Publications

Author	Pubmed ID	Journal	Application
Di Lu	36417796	Redox Biol	WB

Storage

Storage:

Store at -20°C. Stable for one year after shipment.

Storage Buffer:

PBS with 0.02% sodium azide and 50% glycerol pH 7.3.

Aliquoting is unnecessary for -20°C storage

For technical support and original validation data for this product please contact:

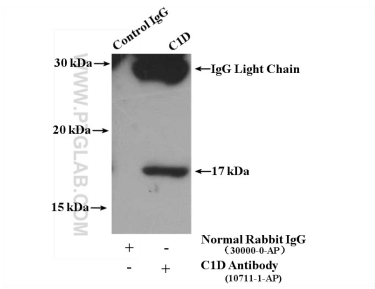
T: 4006900926

E: Proteintech-CN@ptglab.com

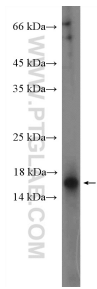
W: ptgcn.com

This product is exclusively available under Proteintech Group brand and is not available to purchase from any other manufacturer.

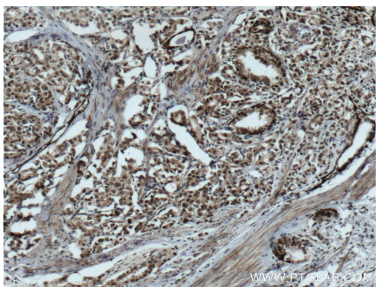
Selected Validation Data



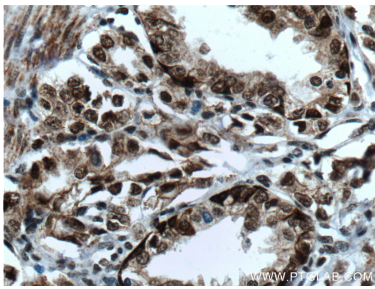
IP result of anti-C1D (IP:10711-1-AP, 4ug; Detection:10711-1-AP 1:300) with DU 145 cells lysate 1800 ug.



DU 145 cells were subjected to SDS PAGE followed by western blot with 10711-1-AP (C1D Antibody) at dilution of 1:300 incubated at room temperature for 1.5 hours.



Immunohistochemical analysis of paraffin-embedded human prostate cancer tissue slide using 10711-1-AP (C1D Antibody) at dilution of 1:200 (under 10x lens). Heat mediated antigen retrieval with Tris-EDTA buffer (pH 9.0).



Immunohistochemical analysis of paraffin-embedded human prostate cancer tissue slide using 10711-1-AP (C1D Antibody) at dilution of 1:200 (under 40x lens). Heat mediated antigen retrieval with Tris-EDTA buffer (pH 9.0).