

For Research Use Only

NELFE Polyclonal antibody

Catalog Number: 10705-1-AP

Featured Product

17 Publications



Basic Information

Catalog Number:

10705-1-AP

Size:

500 µg/ml

Source:

Rabbit

Isotype:

IgG

Immunogen Catalog Number:

AG1186

GenBank Accession Number:

BC011600

GeneID (NCBI):

7936

UNIPROT ID:

P18615

Full Name:

RD RNA binding protein

Calculated MW:

37 kDa, 43 kDa

Observed MW:

43 kDa

Purification Method:

Antigen affinity purification

Recommended Dilutions:

WB 1:2000-1:12000

IP 0.5-4.0 µg for 1.0-3.0 mg of total protein lysate

IHC 1:50-1:200

IF 1:50-1:500

Applications

Tested Applications:

FC, IF/ICC, IHC, IP, WB, ELISA

Cited Applications:

WB, IF, RIP, IHC, ChIP

Species Specificity:

human, mouse, rat

Cited Species:

human, rat, mouse

Note-IHC: suggested antigen retrieval with TE buffer pH 9.0; (*) Alternatively, antigen retrieval may be performed with citrate buffer pH 6.0

Positive Controls:

WB : HEK-293 cells, mouse brain tissue, mouse eye tissue, mouse placenta tissue, rat brain tissue, HeLa cells, mouse kidney tissue, rat kidney tissue

IP : mouse brain tissue,

IHC : human prostate cancer tissue,

IF : HeLa cells,

Background Information

RDBP, also named NELF-E and RD, belongs to the RRM NELF-E family. It is an essential component of the NELF complex which is a complex that negatively regulates the elongation of transcription by RNA polymerase II. The NELF complex, a complex acts via an association with the DSIF complex and causes transcriptional pausing, is counteracted by the P-TEFb kinase complex. RDBP was recently found implicated in RNA polymerase II pausing by association with Hsp90. Catalog# 10705-1-AP is a widely used rabbit polyclonal antibody obtained by immunizing animals with full-length RDBP of human origin.

Notable Publications

Author	Pubmed ID	Journal	Application
Bofeng Liu	33116310	Nature	IF
Jiayao Ou	34697434	Mucosal Immunol	WB
Sylvia C Hewitt	30332301	FASEB J	IHC, WB

Storage

Storage:

Store at -20°C. Stable for one year after shipment.

Storage Buffer:

PBS with 0.02% sodium azide and 50% glycerol pH 7.3.

Aliquoting is unnecessary for -20°C storage

For technical support and original validation data for this product please contact:

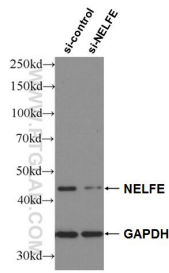
T: 4006900926

E: Proteintech-CN@ptglab.com

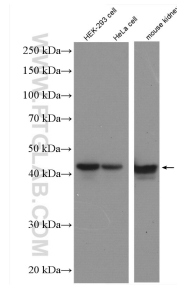
W: ptgcn.com

This product is exclusively available under Proteintech Group brand and is not available to purchase from any other manufacturer.

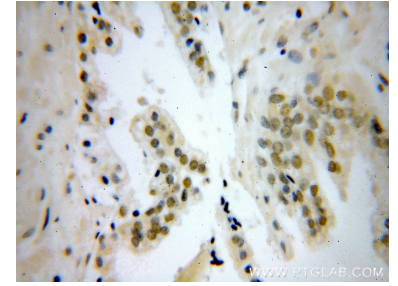
Selected Validation Data



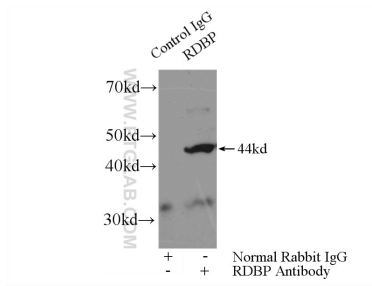
WB result of NELFE antibody (10705-1-AP; 1:60000; incubated at room temperature for 1.5 hours) with sh-Control and sh-NELFE transfected HEK-293 cells.



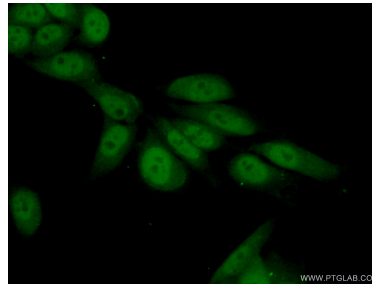
Various lysates were subjected to SDS PAGE followed by western blot with 10705-1-AP (NELFE antibody) at dilution of 1:6000 incubated at room temperature for 1.5 hours.



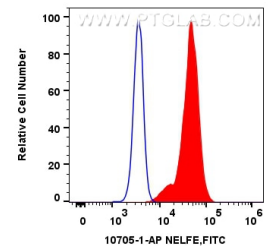
Immunohistochemical analysis of paraffin-embedded human prostate cancer using 10705-1-AP (NELFE antibody) at dilution of 1:100 (under 40x lens).



IP result of anti-NELFE (IP:10705-1-AP, 4ug; Detection:10705-1-AP 1:800) with mouse brain tissue lysate 4680ug.



Immunofluorescent analysis of (10% Formaldehyde) fixed HeLa cells using 10705-1-AP (NELFE antibody) at dilution of 1:50 and Alexa Fluor 488-conjugated AffiniPure Goat Anti-Rabbit IgG(H+L).



1×10^6 HeLa cells were intracellularly stained with 0.2 ug Anti-Human NELFE (10705-1-AP) and CoraLite®488-Conjugated AffiniPure Goat Anti-Rabbit IgG(H+L) at dilution 1:1000 (red), or 0.2 ug Rabbit IgG control Rabbit PolyAb (30000-0-AP) and CoraLite®488-Conjugated AffiniPure Goat Anti-Rabbit IgG(H+L) at dilution 1:1000 (blue). Cells were fixed and permeabilized with Transcription Factor Staining Buffer Kit (PF00011).