

For Research Use Only

KMO Polyclonal antibody

Catalog Number: 10698-1-AP

Featured Product

31 Publications



Basic Information

Catalog Number:

10698-1-AP

Concentration:

900 ug/ml

Source:

Rabbit

Isotype:

IgG

Immunogen Catalog Number:

AG1109

GenBank Accession Number:

BC005297

GeneID (NCBI):

8564

UNIPROT ID:

O15229

Full Name:

kynurenine 3-monooxygenase
(kynurenine 3-hydroxylase)

Calculated MW:

486 aa, 56 kDa

Observed MW:

56 kDa

Purification Method:

Antigen affinity purification

Recommended Dilutions:

IHC 1:50-1:500

IF/ICC 1:50-1:500

Applications

Tested Applications:

IHC, IF/ICC, ELISA

Cited Applications:

WB, IHC, IF

Species Specificity:

human, mouse

Cited Species:

human, mouse, rat

**Note-IHC: suggested antigen retrieval with
TE buffer pH 9.0; (*) Alternatively, antigen
retrieval may be performed with citrate
buffer pH 6.0**

Positive Controls:

IHC : human kidney tissue, human prostate cancer
tissue, human breast cancer tissue, mouse heart tissue

IF/ICC : MCF-7 cells,

Background Information

KMO(Kynurenine 3-monooxygenase) is an NADPH-dependent flavin monooxygenase, catalysing the hydroxylation of the L-kynurenine to form L-3-hydroxykynurenine. KMO is a membrane protein located on the outer membrane of mitochondria. Tissue distribution studies have revealed that, in rats, highest enzyme activity is found in kidney and liver, with brain having the least activity in comparison to peripheral organs(PMID: 9237672).

Notable Publications

Author	Pubmed ID	Journal	Application
NANAKA MORITA	34584567	Oncol Lett	WB,IHC
Aisha M. Swaih	36140394	Biomedicines	WB,IF
Ewelina Rojewska	26524415	Neuropharmacology	WB

Storage

Storage:

Store at -20°C. Stable for one year after shipment.

Storage Buffer:

PBS with 0.02% sodium azide and 50% glycerol pH 7.3.

Aliquoting is unnecessary for -20°C storage

For technical support and original validation data for this product please contact:

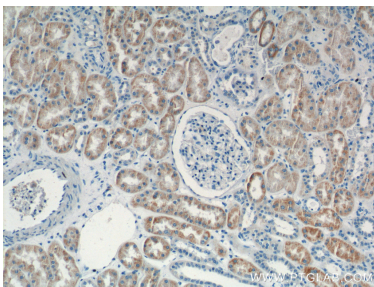
T: 4006900926

E: Proteintech-CN@ptglab.com

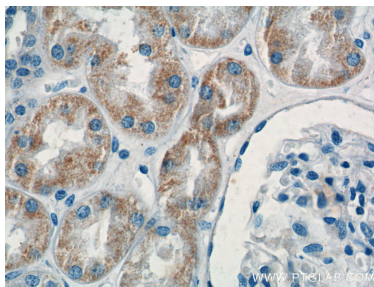
W: ptgcn.com

This product is exclusively available under Proteintech Group brand and is not available to purchase from any other manufacturer.

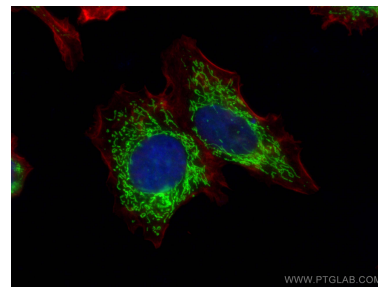
Selected Validation Data



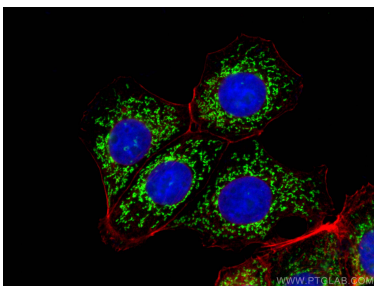
Immunohistochemical analysis of paraffin-embedded human kidney tissue slide using 10698-1-AP (KMO Antibody) at dilution of 1:200 (under 10x lens).



Immunohistochemical analysis of paraffin-embedded human kidney tissue slide using 10698-1-AP (KMO Antibody) at dilution of 1:200 (under 40x lens).



Immunofluorescent analysis of (4% PFA) fixed MCF-7 cells using KMO antibody (10698-1-AP) at dilution of 1:200 and CoraLite®488-Conjugated AffiniPure Goat Anti-Rabbit IgG(H+L), CL594-phalloidin (red).



Immunofluorescent analysis of (4% PFA) fixed MCF-7 cells using KMO antibody (10698-1-AP) at dilution of 1:200 and CoraLite®488-Conjugated AffiniPure Goat Anti-Rabbit IgG(H+L), CL594-phalloidin (red).