

STRADB Polyclonal antibody

Catalog Number: 10688-1-AP

Basic Information

Catalog Number: 10688-1-AP	GenBank Accession Number: BC008302	Purification Method: Antigen affinity purification
Size: 300 µg/ml	GeneID (NCBI): 55437	Recommended Dilutions: WB 1:200-1:1000 IHC 1:100-1:400
Source: Rabbit	UNIPROT ID: Q9C0K7	
Isotype: IgG	Full Name: STE20-related kinase adaptor beta	
Immunogen Catalog Number: AG1040	Calculated MW: 47 kDa Observed MW: 28-31 kDa, 38-42 kDa	

Applications

Tested Applications: IHC, WB, ELISA	Positive Controls:
Species Specificity: human, mouse, rat	WB: Raji cells, mouse heart tissue
Note-IHC: suggested antigen retrieval with TE buffer pH 9.0; (*) Alternatively, antigen retrieval may be performed with citrate buffer pH 6.0	IHC: human heart tissue,

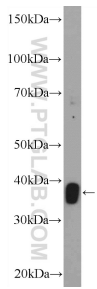
Background Information

The 418 amino acid STRADB protein, which is also named as ALS2CR2 and ILPIP, contains a putative N-terminal ATP-binding site, a protein kinase domain, and several C-terminal phosphorylation sites. STRADB potentiates the antiapoptotic activity of XIAP by enhancing XIAP-mediated activation of JNK1 and other JNK family members, but not by modulating XIAP-mediated caspase inhibition. This protein has 3 isoforms produced by alternative splicing with the MW of 47 kDa, 42 kDa and 31 kDa.

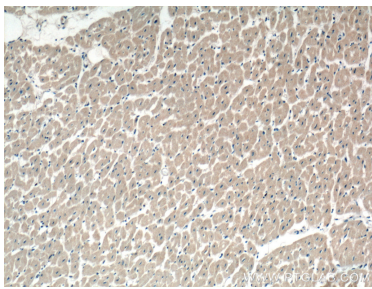
Storage

Storage:
Store at -20°C. Stable for one year after shipment.
Storage Buffer:
PBS with 0.02% sodium azide and 50% glycerol pH 7.3.
Aliquoting is unnecessary for -20°C storage

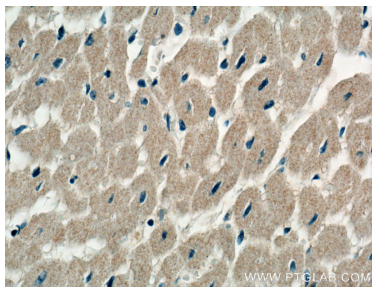
Selected Validation Data



Raji cells were subjected to SDS PAGE followed by western blot with 10688-1-AP (STRADB Antibody) at dilution of 1:300 incubated at 4 degree celsius over night.



Immunohistochemical analysis of paraffin-embedded human heart tissue slide using 10688-1-AP (STRADB Antibody) at dilution of 1:200 (under 10x lens).



Immunohistochemical analysis of paraffin-embedded human heart tissue slide using 10688-1-AP (STRADB Antibody) at dilution of 1:200 (under 40x lens).