

For Research Use Only

RERG Polyclonal antibody

Catalog Number: 10687-1-AP

Featured Product

5 Publications



Basic Information

Catalog Number:

10687-1-AP

Size:

300 µg/ml

Source:

Rabbit

Isotype:

IgG

Immunogen Catalog Number:

AG1041

GenBank Accession Number:

BC007997

GeneID (NCBI):

85004

UNIPROT ID:

Q96A58

Full Name:

RAS-like, estrogen-regulated, growth inhibitor

Calculated MW:

23 kDa

Observed MW:

23-26 kDa

Purification Method:

Antigen affinity purification

Recommended Dilutions:

WB 1:1000-1:6000

Applications

Tested Applications:

WB, ELISA

Cited Applications:

WB, IF, IHC

Species Specificity:

human, mouse

Cited Species:

human

Positive Controls:

WB: NIH/3T3 cells, MCF-7 cells

Background Information

RERG (Ras-related and estrogen-regulated growth inhibitor), a gene that encodes a small GTP binding and hydrolyzing protein (GTPase) of the Ras superfamily, is a novel gene that was first reported in breast cancer. RERG gene expression is stimulated by the estrogen receptor alpha (ERalpha), and RERG gene expression is absent in ER-negative breast cancer. RERG can bind and hydrolyze GTP as a GTP/GDP molecular switch, and RERG has been shown to possess growth inhibitory activity in breast cancer cells.

Notable Publications

Author	Pubmed ID	Journal	Application
Ying Xiong	30431143	Oncol Rep	
Lucie Coillard	35847954	Front Oncol	WB,IF
Xujuan Zhang	37457559	Front Med (Lausanne)	IHC

Storage

Storage:

Store at -20°C. Stable for one year after shipment.

Storage Buffer:

PBS with 0.02% sodium azide and 50% glycerol pH 7.3.

Aliquoting is unnecessary for -20°C storage

For technical support and original validation data for this product please contact:

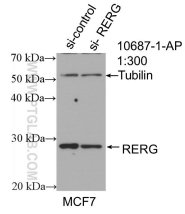
T: 4006900926

E: Proteintech-CN@ptglab.com

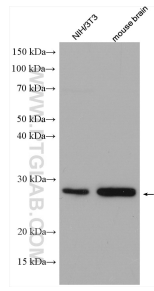
W: ptgcn.com

This product is exclusively available under Proteintech Group brand and is not available to purchase from any other manufacturer.

Selected Validation Data



WB result of RERG antibody (10687-1-AP; 1:1000; incubated at room temperature for 1.5 hours) with sh-Control and sh-REG transfected MCF-7 cells.



Various lysates were subjected to SDS PAGE followed by western blot with 10687-1-AP (RERG antibody) at dilution of 1:3000 incubated at room temperature for 1.5 hours.