

KLK3/PSA Polyclonal antibody

Catalog Number: 10679-1-AP

26 Publications

Basic Information

Catalog Number:

10679-1-AP

Concentration:

700 µg/ml

Source:

Rabbit

Isotype:

IgG

Immunogen Catalog Number:

AG1060

GenBank Accession Number:

BC005307

GeneID (NCBI):

354

UNIPROT ID:

P07288

Full Name:

kallikrein-related peptidase 3

Calculated MW:

29 kDa

Observed MW:

30-34 kDa

Purification Method:

Antigen affinity purification

Recommended Dilutions:

WB 1:1000-1:8000

IP 0.5-4.0 µg for 1.0-3.0 mg of total protein lysate

IHC 1:100-1:400

IF/ICC 1:50-1:500

Applications

Tested Applications:

WB, IHC, IF/ICC, IP, ELISA

Cited Applications:

WB, IHC, IF, IP

Species Specificity:

human

Cited Species:

human, mouse, rat

Note-IHC: suggested antigen retrieval with TE buffer pH 9.0; (*) Alternatively, antigen retrieval may be performed with citrate buffer pH 6.0

Positive Controls:

WB : LNCaP cells, Transfected HEK-293 cells

IP : LNCaP cells,

IHC : human prostate cancer tissue,

IF/ICC : LNCaP cells,

Background Information

Kallikreins are a subgroup of serine proteases having diverse physiological functions. Growing evidence suggests that many kallikreins are implicated in carcinogenesis and some have potential as novel cancer and other disease biomarkers. kallikrein-related peptidase 3, which is also called PSA (prostate-specific antigen) in the clinical setting, is useful in the diagnosis and monitoring of prostatic carcinoma. KLK3 has 5 isoforms produced by alternative splicing.

Notable Publications

Author	Pubmed ID	Journal	Application
Yalcin Erzurumlu	36445513	Mol Biol Rep	WB
Yalan Xu	36434710	Stem Cell Res Ther	IHC, IF
Hui Ma	31127646	J Cell Biochem	IHC

Storage

Storage:

Store at -20°C. Stable for one year after shipment.

Storage Buffer:

PBS with 0.02% sodium azide and 50% glycerol

Aliquoting is unnecessary for -20°C storage

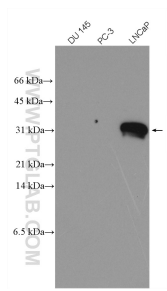
For technical support and original validation data for this product please contact:

T: 4006900926

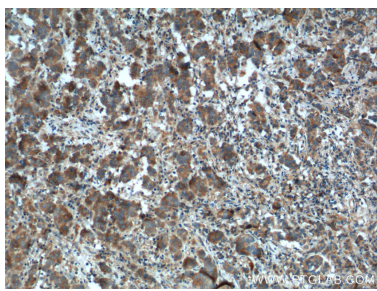
E: Proteintech-CN@ptglab.comW: ptgcn.com

This product is exclusively available under Proteintech Group brand and is not available to purchase from any other manufacturer.

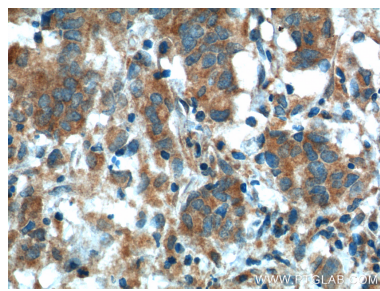
Selected Validation Data



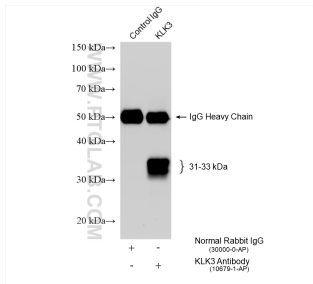
DU 145(PSA-), PC-3(PSA-) and LNCaP (PSA+) cell lysates were subjected to SDS PAGE followed by western blot with 10679-1-AP (KLK3/PSA antibody) at dilution of 1:4000 incubated at room temperature for 1.5 hours.



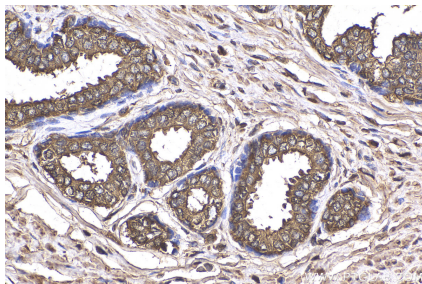
Immunohistochemical analysis of paraffin-embedded human prostate cancer tissue slide using 10679-1-AP (KLK3/PSA antibody) at dilution of 1:200 (under 10x lens). Heat mediated antigen retrieval with Tris-EDTA buffer (pH 9.0).



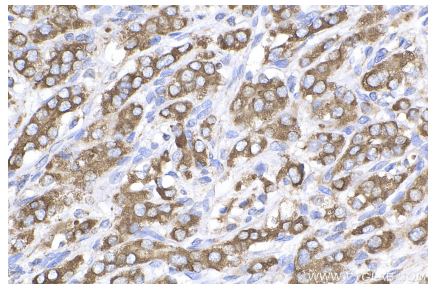
Immunohistochemical analysis of paraffin-embedded human prostate cancer tissue slide using 10679-1-AP (KLK3/PSA antibody) at dilution of 1:200 (under 40x lens). Heat mediated antigen retrieval with Tris-EDTA buffer (pH 9.0).



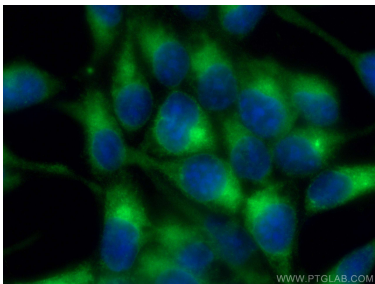
IP result of anti-KLK3/PSA (IP:10679-1-AP, 4ug; Detection:10679-1-AP 1:10000) with LNCaP cells lysate 1520 ug.



Immunohistochemical analysis of paraffin-embedded human prostate cancer tissue slide using 10679-1-AP (KLK3/PSA antibody) at dilution of 1:500 (under 40x lens). Heat mediated antigen retrieval with Tris-EDTA buffer (pH 9.0).



Immunohistochemical analysis of paraffin-embedded human prostate cancer tissue slide using 10679-1-AP (KLK3/PSA antibody) at dilution of 1:500 (under 40x lens). Heat mediated antigen retrieval with Tris-EDTA buffer (pH 9.0).



Immunofluorescent analysis of (-20°C Methanol) fixed LNCaP cells using KLK3/PSA antibody (10679-1-AP) at dilution of 1:200 and CoraLite®488-Conjugated Goat Anti-Rabbit IgG(H+L).