

For Research Use Only

OSTF1 Polyclonal antibody

Catalog Number: 10671-1-AP

1 Publications



Basic Information

Catalog Number:

10671-1-AP

Size:

400 ug/ml

Source:

Rabbit

Isotype:

IgG

Immunogen Catalog Number:

AG1072

GenBank Accession Number:

BC007459

GeneID (NCBI):

26578

UNIPROT ID:

Q92882

Full Name:

osteoclast stimulating factor 1

Calculated MW:

28 kDa

Observed MW:

28 kDa

Purification Method:

Antigen affinity purification

Recommended Dilutions:

WB 1:1000-1:4000

IHC 1:20-1:200

Applications

Tested Applications:

WB, IHC, ELISA

Cited Applications:

WB, IHC

Species Specificity:

human, mouse, rat

Cited Species:

human, rat

Note-IHC: suggested antigen retrieval with TE buffer pH 9.0; (*) Alternatively, antigen retrieval may be performed with citrate buffer pH 6.0

Positive Controls:

WB : HeLa cells, C2C12 cells, HepG2 cells, U-937 cells

IHC : human breast cancer tissue, human kidney tissue, human lung tissue, human placenta tissue, human testis tissue

Background Information

OSTF1 (Osteoclast-stimulating factor-1) is an intracellular protein produced by osteoclasts that indirectly induces osteoclast formation and bone resorption. It induces bone resorption, acting probably through a signaling cascade which results in the secretion of factor(s) enhancing osteoclast formation and activity

Notable Publications

Author	Pubmed ID	Journal	Application
Bin Hu	38699012	Heliyon	WB,IHC

Storage

Storage:

Store at -20°C. Stable for one year after shipment.

Storage Buffer:

PBS with 0.02% sodium azide and 50% glycerol pH 7.3.

Aliquoting is unnecessary for -20°C storage

For technical support and original validation data for this product please contact:

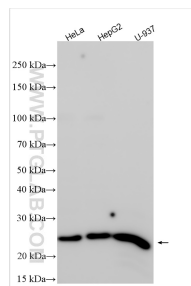
T: 4006900926

E: Proteintech-CN@ptglab.com

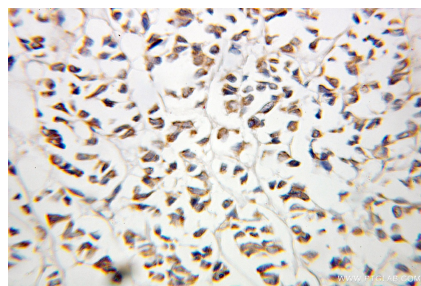
W: ptgcn.com

This product is exclusively available under Proteintech Group brand and is not available to purchase from any other manufacturer.

Selected Validation Data



Various lysates were subjected to SDS PAGE followed by western blot with 10671-1-AP (OSTF1 antibody) at dilution of 1:2000 incubated at room temperature for 1.5 hours.



Immunohistochemical analysis of paraffin-embedded human breast cancer using 10671-1-AP (OSTF1 antibody) at dilution of 1:100 (under 25x lens).