

For Research Use Only

# PMM2 Polyclonal antibody, PBS Only

Catalog Number: 10666-1-PBS

Featured Product



## Basic Information

Catalog Number:

10666-1-PBS

Size:

1 mg/ml

Source:

Rabbit

Isotype:

IgG

Immunogen Catalog Number:

AG1031

GenBank Accession Number:

BC008310

GeneID (NCBI):

5373

UNIPROT ID:

O15305

Full Name:

phosphomannomutase 2

Calculated MW:

28 kDa

Observed MW:

28-30 kDa

Purification Method:

Antigen affinity purification

## Applications

Tested Applications:

WB, IHC, IF/ICC, IP, Indirect ELISA

Species Specificity:

human, mouse

## Background Information

PMM2(Phosphomannomutase 2) belongs to the eukaryotic PMM family. It is involved in the synthesis of the GDP-mannose and dolichol-phosphate-mannose required for a number of critical mannosyl transfer reactions. PMM2 catalyzes the second step in the conversion of fructose-6P to GDP-mannose.

## Storage

Storage:

Store at -80°C.

**The product is shipped with ice packs. Upon receipt, store it immediately at -80°C**

Storage Buffer:

PBS Only

For technical support and original validation data for this product please contact:

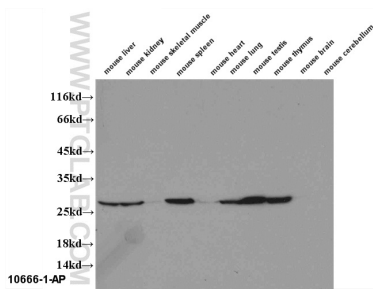
T: 4006900926

E: [Proteintech-CN@ptglab.com](mailto:Proteintech-CN@ptglab.com)

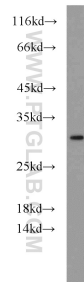
W: [ptgcn.com](http://ptgcn.com)

**This product is exclusively available under Proteintech Group brand and is not available to purchase from any other manufacturer.**

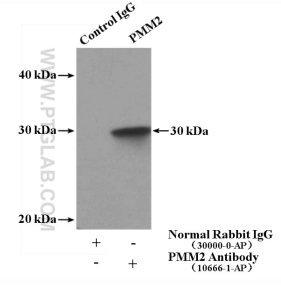
## Selected Validation Data



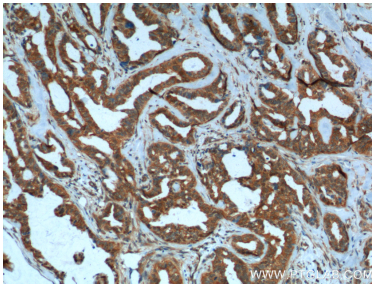
WB results of 10666-1-AP (PMM2 antibody) on several lysates. This data was developed using the same antibody clone with 10666-1-PBS in a different storage buffer formulation.



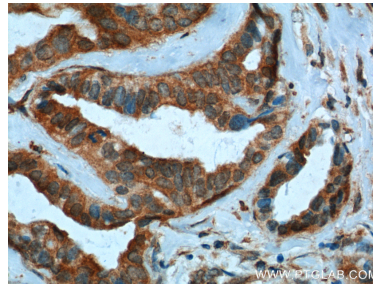
HepG2 cells were subjected to SDS PAGE followed by western blot with 10666-1-AP (PMM2 antibody) at dilution of 1:1000 incubated at room temperature for 1.5 hours. This data was developed using the same antibody clone with 10666-1-PBS in a different storage buffer formulation.



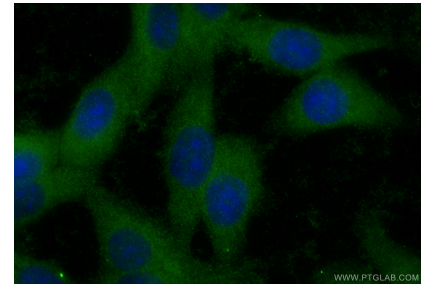
IP result of anti-PMM2 (IP:10666-1-AP, 4ug; Detection:10666-1-AP 1:1000) with mouse lung tissue lysate 3600ug. This data was developed using the same antibody clone with 10666-1-PBS in a different storage buffer formulation.



Immunohistochemical analysis of paraffin-embedded human breast cancer tissue slide using 10666-1-AP (PMM2 Antibody) at dilution of 1:400 (under 10x lens). Heat mediated antigen retrieval with Tris-EDTA buffer (pH 9.0). This data was developed using the same antibody clone with 10666-1-PBS in a different storage buffer formulation.



Immunohistochemical analysis of paraffin-embedded human breast cancer tissue slide using 10666-1-AP (PMM2 Antibody) at dilution of 1:400 (under 40x lens). Heat mediated antigen retrieval with Tris-EDTA buffer (pH 9.0). This data was developed using the same antibody clone with 10666-1-PBS in a different storage buffer formulation.



Immunofluorescent analysis of (-20°C Ethanol) fixed HepG2 cells using PMM2 antibody (10666-1-AP) at dilution of 1:200 and CoraLite®488-Conjugated Goat Anti-Rabbit IgG(H+L) (SA00013-2). This data was developed using the same antibody clone with 10666-1-PBS in a different storage buffer formulation.