

For Research Use Only

PMM2 Polyclonal antibody

Catalog Number: 10666-1-AP

Featured Product

9 Publications



Basic Information

Catalog Number:

10666-1-AP

Size:

600 µg/ml

Source:

Rabbit

Isotype:

IgG

Immunogen Catalog Number:

AG1031

GenBank Accession Number:

BC008310

GeneID (NCBI):

5373

UNIPROT ID:

O15305

Full Name:

phosphomannomutase 2

Calculated MW:

28 kDa

Observed MW:

28-30 kDa

Purification Method:

Antigen affinity purification

Recommended Dilutions:

WB 1:500-1:2000

IP 0.5-4.0 µg for 1.0-3.0 mg of total protein lysate

IHC 1:200-1:800

IF 1:20-1:200

Applications

Tested Applications:

IF/ICC, IHC, IP, WB, ELISA

Cited Applications:

WB, IF, IHC

Species Specificity:

human, mouse

Cited Species:

human, mouse

Note-IHC: suggested antigen retrieval with TE buffer pH 9.0; (*) Alternatively, antigen retrieval may be performed with citrate buffer pH 6.0

Positive Controls:

WB : HepG2 cells, multi-tissue

IP : mouse lung tissue,

IHC : human breast cancer tissue,

IF : HepG2 cells,

Background Information

PMM2(Phosphomannomutase 2) belongs to the eukaryotic PMM family. It is involved in the synthesis of the GDP-mannose and dolichol-phosphate-mannose required for a number of critical mannosyl transfer reactions. PMM2 catalyzes the second step in the conversion of fructose-6P to GDP-mannose.

Notable Publications

Author	Pubmed ID	Journal	Application
Giuseppina Andreotti	26488408	PLoS One	WB
Sangeetha Iyer	31636082	Dis Model Mech	WB
Marlen Görlacher	33209585	Mol Genet Metab Rep	WB,IF

Storage

Storage:

Store at -20°C. Stable for one year after shipment.

Storage Buffer:

PBS with 0.02% sodium azide and 50% glycerol pH 7.3.

Aliquoting is unnecessary for -20°C storage

For technical support and original validation data for this product please contact:

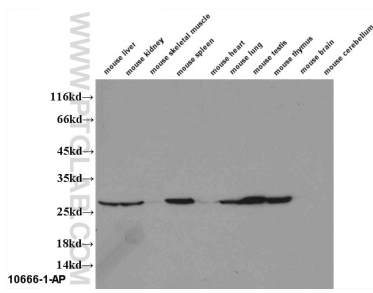
T: 4006900926

E: Proteintech-CN@ptglab.com

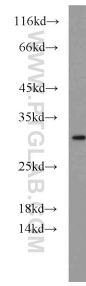
W: ptgcn.com

This product is exclusively available under Proteintech Group brand and is not available to purchase from any other manufacturer.

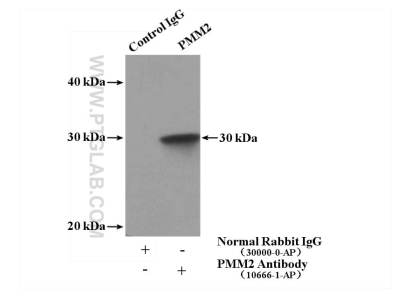
Selected Validation Data



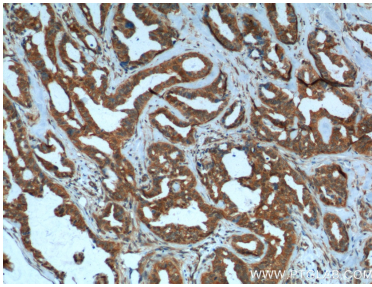
WB results of 10666-1-AP (PMM2 antibody) on several lysates.



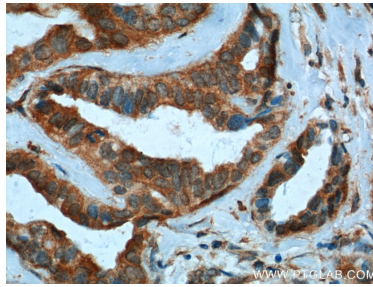
HepG2 cells were subjected to SDS PAGE followed by western blot with 10666-1-AP (PMM2 antibody) at dilution of 1:1000 incubated at room temperature for 1.5 hours.



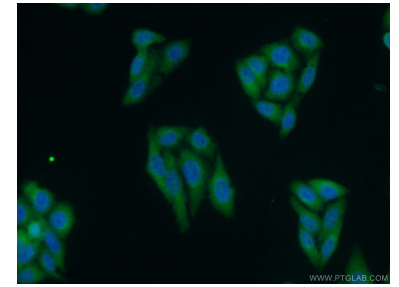
IP result of anti-PMM2 (IP:10666-1-AP, 4ug; Detection:10666-1-AP 1:1000) with mouse lung tissue lysate 3600ug.



Immunohistochemical analysis of paraffin-embedded human breast cancer tissue slide using 10666-1-AP (PMM2 Antibody) at dilution of 1:400 (under 10x lens). Heat mediated antigen retrieval with Tris-EDTA buffer (pH 9.0).



Immunohistochemical analysis of paraffin-embedded human breast cancer tissue slide using 10666-1-AP (PMM2 Antibody) at dilution of 1:400 (under 40x lens). Heat mediated antigen retrieval with Tris-EDTA buffer (pH 9.0).



Immunofluorescent analysis of HepG2 cells using 10666-1-AP (PMM2 antibody) at dilution of 1:50 and Alexa Fluor 488-conjugated AffiniPure Goat Anti-Rabbit IgG(H+L).