

For Research Use Only

# SULT1C2 Polyclonal antibody

Catalog Number: 10662-1-AP **7 Publications**



## Basic Information

<b>Catalog Number:</b> 10662-1-AP	<b>GenBank Accession Number:</b> BC005353	<b>Purification Method:</b> Antigen affinity purification
<b>Size:</b> 600 µg/ml	<b>GeneID (NCBI):</b> 6819	<b>Recommended Dilutions:</b> WB 1:500-1:2000 IHC 1:50-1:500
<b>Source:</b> Rabbit	<b>UNIPROT ID:</b> O00338	
<b>Isotype:</b> IgG	<b>Full Name:</b> sulfotransferase family, cytosolic, 1C, member 2	
<b>Immunogen Catalog Number:</b> AG1064	<b>Calculated MW:</b> 35 kDa	
	<b>Observed MW:</b> 30-35 kDa	

## Applications

<b>Tested Applications:</b> IHC, WB, ELISA	<b>Positive Controls:</b> WB : human stomach tissue, human kidney tissue, human liver tissue, mouse liver tissue IHC : human prostate cancer tissue,
<b>Cited Applications:</b> WB, IHC	
<b>Species Specificity:</b> human, mouse, rat	
<b>Cited Species:</b> human, rat	
<b>Note-IHC: suggested antigen retrieval with TE buffer pH 9.0; (*) Alternatively, antigen retrieval may be performed with citrate buffer pH 6.0</b>	

## Background Information

SULT1C2, also named as SULT1C1, ST1C2, ST1C1, and humSULTC2, belongs to the sulfotransferase 1 family. It is a sulfotransferase enzymes that catalyze the sulfate conjugation of many hormones, neurotransmitters, drugs, and xenobiotic compounds. SULT1C2 may be involved in the activation of carcinogenic hydroxylamines. It is responsible for transferring a sulfo moiety from PAPS to phenol-containing compounds.

## Notable Publications

Author	Pubmed ID	Journal	Application
Shu Xiao-Hong XH	22096581	PLoS One	WB, IHC
Shuo Cong	33691721	Nutr Metab (Lond)	WB
Xu Zheng	30116486	Oxid Med Cell Longev	WB

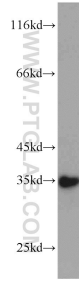
## Storage

**Storage:**  
Store at -20°C. Stable for one year after shipment.  
**Storage Buffer:**  
PBS with 0.02% sodium azide and 50% glycerol pH 7.3.  
Aliquoting is unnecessary for -20°C storage

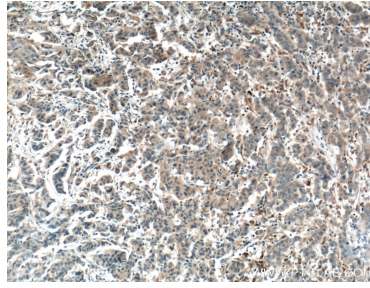
For technical support and original validation data for this product please contact:  
T: 4006900926 E: Proteintech-CN@ptglab.com W: ptgcn.com

**This product is exclusively available under Proteintech Group brand and is not available to purchase from any other manufacturer.**

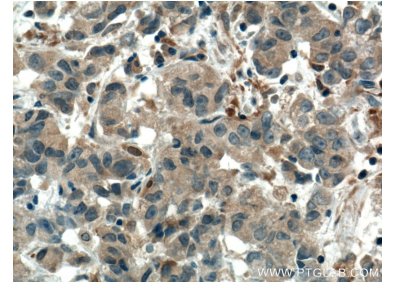
## Selected Validation Data



human stomach tissue were subjected to SDS PAGE followed by western blot with 10662-1-AP (SULT1C2 antibody) at dilution of 1:1000 incubated at room temperature for 1.5 hours.



Immunohistochemical analysis of paraffin-embedded human prostate cancer tissue slide using 10662-1-AP (SULT1C2 Antibody) at dilution of 1:200 (under 10x lens). Heat mediated antigen retrieval with Tris-EDTA buffer (pH 9.0).



Immunohistochemical analysis of paraffin-embedded human prostate cancer tissue slide using 10662-1-AP (SULT1C2 Antibody) at dilution of 1:200 (under 40x lens). Heat mediated antigen retrieval with Tris-EDTA buffer (pH 9.0).