

For Research Use Only

Neurofibromin 2 Polyclonal antibody

Catalog Number: 10659-1-AP

1 Publications



Basic Information

Catalog Number:

10659-1-AP

Size:

400 ug/ml

Source:

Rabbit

Isotype:

IgG

Immunogen Catalog Number:

AG1013

GenBank Accession Number:

BC007279

GeneID (NCBI):

4771

UNIPROT ID:

P35240

Full Name:

neurofibromin 2 (merlin)

Calculated MW:

70 kDa

Observed MW:

64-66 kDa

Purification Method:

Antigen affinity purification

Recommended Dilutions:

WB 1:1000-1:6000

IHC 1:50-1:500

Applications

Tested Applications:

WB, IHC, ELISA

Cited Applications:

WB

Species Specificity:

human, mouse

Cited Species:

human

Note-IHC: suggested antigen retrieval with TE buffer pH 9.0; (*) Alternatively, antigen retrieval may be performed with citrate buffer pH 6.0

Positive Controls:

WB : Jurkat cells, human kidney tissue, mouse kidney tissue, NIH/3T3 cells, rat kidney tissue

IHC : human stomach tissue,

Background Information

Neurofibromatosis 2 (NF2) tumor suppressor protein-merlin is involved in Hippo/SWH signaling pathway that associated with tumor suppression by restricting proliferation and promoting apoptosis. It has been reported that merlin can change to phosphorylation form which inactivates merlin tumor suppressive abilities at serine 518 induced by Rac effector p21-activated kinase 2. The mutation of the NF2 tumor suppressor gene may lead to nervous system tumors, mesotheliomas and metastatic tumors.

Notable Publications

Author	Pubmed ID	Journal	Application
Wenbo Ma	38641672	J Exp Clin Cancer Res	WB

Storage

Storage:

Store at -20°C. Stable for one year after shipment.

Storage Buffer:

PBS with 0.02% sodium azide and 50% glycerol pH 7.3.

Aliquoting is unnecessary for -20°C storage

For technical support and original validation data for this product please contact:

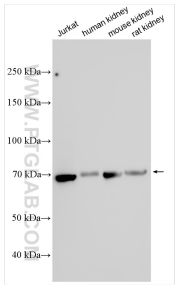
T: 4006900926

E: Proteintech-CN@ptglab.com

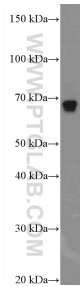
W: ptgcn.com

This product is exclusively available under Proteintech Group brand and is not available to purchase from any other manufacturer.

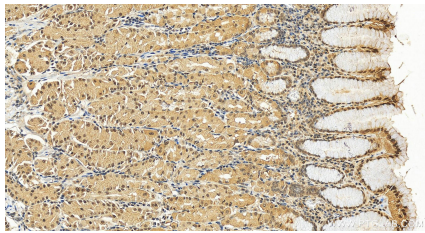
Selected Validation Data



Various lysates were subjected to SDS PAGE followed by western blot with 10659-1-AP (Neurofibromin 2 antibody) at dilution of 1:3000 incubated at room temperature for 1.5 hours.



mouse kidney tissue were subjected to SDS PAGE followed by western blot with 10659-1-AP (Neurofibromin 2 Antibody) at dilution of 1:600 incubated at room temperature for 1.5 hours.



Immunohistochemical analysis of paraffin-embedded human stomach tissue slide using 10659-1-AP (Neurofibromin 2 antibody) at dilution of 1:200 (under 20x lens). Heat mediated antigen retrieval with Tris-EDTA buffer (pH 9.0).