

# CDC25B Polyclonal antibody

Catalog Number: 10644-1-AP

2 Publications

## Basic Information

## Catalog Number:

10644-1-AP

## Size:

133 µg/ml

## Source:

Rabbit

## Isotype:

IgG

## Immunogen Catalog Number:

AG0994

## GenBank Accession Number:

BC006395

## GeneID (NCBI):

994

## UNIPROT ID:

P30305

## Full Name:

cell division cycle 25 homolog B (S. pombe)

## Calculated MW:

65 kDa

## Observed MW:

60-70 kDa

## Purification Method:

Antigen affinity purification

## Recommended Dilutions:

WB 1:200-1:1000

IP 0.5-4.0 µg for 1.0-3.0 mg of total protein lysate

IHC 1:20-1:200

## Applications

## Tested Applications:

WB, IP, IHC, ELISA

## Cited Applications:

WB, IF

## Species Specificity:

human, mouse

## Cited Species:

mouse

**Note-IHC: suggested antigen retrieval with TE buffer pH 9.0; (\*) Alternatively, antigen retrieval may be performed with citrate buffer pH 6.0**

## Positive Controls:

WB: mouse liver tissue, Jurkat cells, mouse brain tissue, Raji cells

IP: mouse liver tissue,

IHC: human lymphoma tissue,

## Background Information

CDC25B, also named as CDC25HU2, belongs to the MPI phosphatase family. It is a tyrosine protein phosphatase which functions as a dosage-dependent inducer of mitotic progression. CDC25B directly dephosphorylates CDK1 and stimulates its kinase activity. The three isoforms seem to have a different level of activity. In Jurkat cell, this antibody recognized 2 bands: 60kd(isoform 2, CDC25B2) and 70kd(isoform 4 of CDC25B).

## Notable Publications

Author	Pubmed ID	Journal	Application
Alaa A Eisa	31640562	BMC Dev Biol	IF
Santanu De	23547714	BMC Dev Biol	WB, IF

## Storage

## Storage:

Store at -20°C. Stable for one year after shipment.

## Storage Buffer:

PBS with 0.02% sodium azide and 50% glycerol pH 7.3.

Aliquoting is unnecessary for -20°C storage

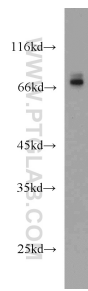
For technical support and original validation data for this product please contact:

T: 4006900926

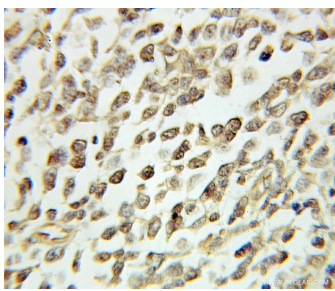
E: [Proteintech-CN@ptglab.com](mailto:Proteintech-CN@ptglab.com)W: [ptgcn.com](http://ptgcn.com)

**This product is exclusively available under Proteintech Group brand and is not available to purchase from any other manufacturer.**

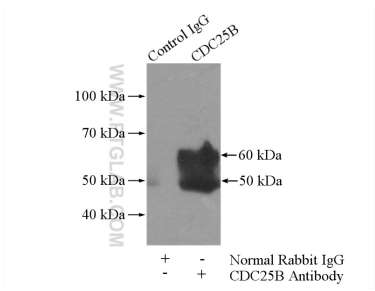
Selected Validation Data



mouse liver tissue were subjected to SDS PAGE followed by western blot with 10644-1-AP (CDC25B antibody) at dilution of 1:300 incubated at room temperature for 1.5 hours.



Immunohistochemical analysis of paraffin-embedded human lymphoma using 10644-1-AP (CDC25B antibody) at dilution of 1:100 (under 10x lens).



IP result of anti-CDC25B (IP:10644-1-AP, 4ug; Detection:10644-1-AP 1:300) with mouse liver tissue lysate 4000ug.