

For Research Use Only

# TDP1 Polyclonal antibody, PBS Only

Catalog Number:10641-1-PBS

Featured Product



## Basic Information

Catalog Number:

10641-1-PBS

Size:

1 mg/ml

Source:

Rabbit

Isotype:

IgG

Immunogen Catalog Number:

AG0964

GenBank Accession Number:

BC006083

GeneID (NCBI):

55775

UNIPROT ID:

Q9NUW8

Full Name:

tyrosyl-DNA phosphodiesterase 1

Calculated MW:

34 kDa, 68 kDa

Observed MW:

68 kDa

Purification Method:

Antigen affinity purification

## Applications

Tested Applications:

WB, IHC, IP, Indirect ELISA

Species Specificity:

human

## Background Information

Tyrosyl DNA phosphodiesterase 1 (TDP1) is an enzyme capable of hydrolyzing phosphodiester bonds between tyrosine and the 3-phosphate of DNA, which are typically generated in a transient manner by DNA topoisomerase I (topo I) and it appears to be more mobile and diffusible than topo I, and it has a different distribution in the nucleus (PMID:15494395). TDP1 is involved in protecting cells against oxidative DNA damage, and with the impaired ability of TDP1-deficient cells to remove 3-phosphoglycolate (PMID:21041670). Defects in TDP1 are the cause of spinocerebellar ataxia autosomal recessive with axonal neuropathy (SCAN1)(PMID:17948061).

## Storage

Storage:

Store at -80°C.

**The product is shipped with ice packs. Upon receipt, store it immediately at -80°C**

Storage Buffer:

PBS Only

For technical support and original validation data for this product please contact:

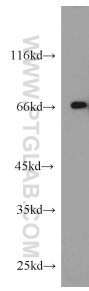
T: 4006900926

E: [Proteintech-CN@ptglab.com](mailto:Proteintech-CN@ptglab.com)

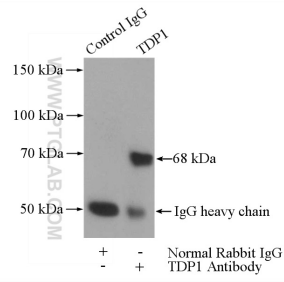
W: [ptgcn.com](http://ptgcn.com)

**This product is exclusively available under Proteintech Group brand and is not available to purchase from any other manufacturer.**

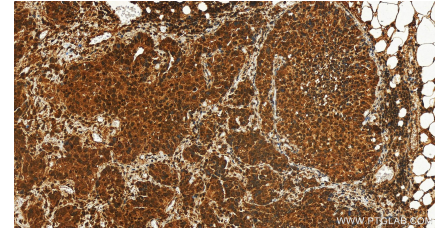
## Selected Validation Data



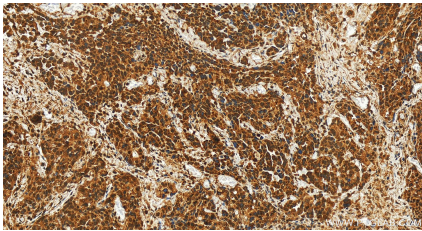
MCF7 cells were subjected to SDS PAGE followed by western blot with 10641-1-AP (TDP1 antibody) at dilution of 1:1000 incubated at room temperature for 1.5 hours. This data was developed using the same antibody clone with 10641-1-PBS in a different storage buffer formulation.



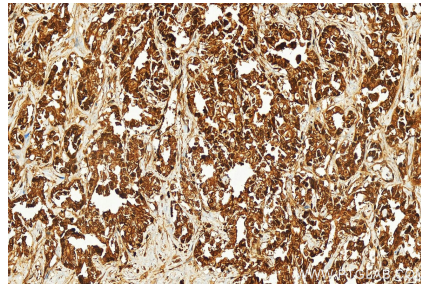
IP result of anti-TDP1 (IP:10641-1-AP, 4ug; Detection:10641-1-AP 1:1000) with HeLa cells lysate 1200ug. This data was developed using the same antibody clone with 10641-1-PBS in a different storage buffer formulation.



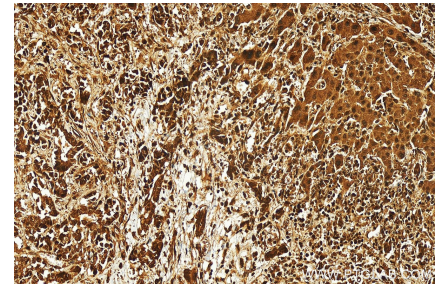
Immunohistochemical analysis of paraffin-embedded human ovary cancer tissue slide using 10641-1-AP (TDP1 antibody) at dilution of 1:200 (under 20x lens). Heat mediated antigen retrieval with Tris-EDTA buffer (pH 9.0). This data was developed using the same antibody clone with 10641-1-PBS in a different storage buffer formulation.



Immunohistochemical analysis of paraffin-embedded human ovary cancer tissue slide using 10641-1-AP (TDP1 antibody) at dilution of 1:200 (under 20x lens). Heat mediated antigen retrieval with Tris-EDTA buffer (pH 9.0). This data was developed using the same antibody clone with 10641-1-PBS in a different storage buffer formulation.



Immunohistochemical analysis of paraffin-embedded human intrahepatic cholangiocarcinoma tissue slide using 10641-1-AP (TDP1 antibody) at dilution of 1:200 (under 20x lens). Heat mediated antigen retrieval with Tris-EDTA buffer (pH 9.0). This data was developed using the same antibody clone with 10641-1-PBS in a different storage buffer formulation.



Immunohistochemical analysis of paraffin-embedded human intrahepatic cholangiocarcinoma tissue slide using 10641-1-AP (TDP1 antibody) at dilution of 1:200 (under 20x lens). Heat mediated antigen retrieval with Tris-EDTA buffer (pH 9.0). This data was developed using the same antibody clone with 10641-1-PBS in a different storage buffer formulation.