

For Research Use Only

RHOC Polyclonal antibody

Catalog Number: 10632-1-AP **17 Publications**



Basic Information

Catalog Number: 10632-1-AP	GenBank Accession Number: BC007245	Purification Method: Antigen affinity purification
Size: 300 µg/ml	GeneID (NCBI): 389	Recommended Dilutions: WB 1:2000-1:16000
Source: Rabbit	UNIPROT ID: P08134	
Isotype: IgG	Full Name: ras homolog gene family, member C	
Immunogen Catalog Number: AG0988	Calculated MW: 22 kDa	
	Observed MW: 22 kDa	

Applications

Tested Applications: WB, ELISA	Positive Controls: WB : A549 cells, NIH/3T3 cells, C6 cells, HeLa cells
Cited Applications: WB, IHC	
Species Specificity: human, mouse, rat	
Cited Species: human, rat	

Background Information

Ras homolog family member C (RHOC) encodes a Rho-related GTP-binding protein, which belongs to small GTPase superfamily and also Rho family. RHOC. Regulates a signal transduction pathway linking plasma membrane receptors to the assembly of focal adhesions and actin stress fibers. Expression of RHOC contributes to metastatic phenotype of melanoma cells and is associated with multiple cancers including gastric carcinomas, ovarian carcinomas and breast cancer as well.

Notable Publications

Author	Pubmed ID	Journal	Application
Yu Lian	30326930	J Exp Clin Cancer Res	WB
Xiu-Bo Sang	27748937	Oncol Rep	
Shuo Chen	28984384	Mol Carcinog	WB, IHC

Storage

Storage:
Store at -20°C. Stable for one year after shipment.
Storage Buffer:
PBS with 0.02% sodium azide and 50% glycerol pH 7.3.
Aliquoting is unnecessary for -20°C storage

For technical support and original validation data for this product please contact:

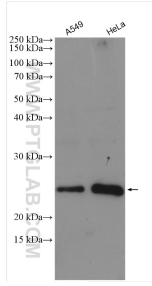
T: 4006900926

E: Proteintech-CN@ptglab.com

W: ptgcn.com

This product is exclusively available under Proteintech Group brand and is not available to purchase from any other manufacturer.

Selected Validation Data



Various lysates were subjected to SDS PAGE followed by western blot with 10632-1-AP (RHOC antibody) at dilution of 1:8000 incubated at room temperature for 1.5 hours.