

For Research Use Only

EEFSEC Polyclonal antibody

Catalog Number: 10628-1-AP **1 Publications**



Basic Information

Catalog Number:

10628-1-AP

Size:

350 µg/ml

Source:

Rabbit

Isotype:

IgG

Immunogen Catalog Number:

AG0980

GenBank Accession Number:

BC007933

GeneID (NCBI):

60678

UNIPROT ID:

P57772

Full Name:

eukaryotic elongation factor,
selenocysteine-tRNA-specific

Calculated MW:

63 kDa

Observed MW:

65 kDa

Purification Method:

Antigen affinity purification

Recommended Dilutions:

WB 1:1000-1:6000

IHC 1:50-1:500

Applications

Tested Applications:

IHC, WB, ELISA

Cited Applications:

WB

Species Specificity:

human

Cited Species:

human

Note-IHC: suggested antigen retrieval with TE buffer pH 9.0; (*) Alternatively, antigen retrieval may be performed with citrate buffer pH 6.0

Positive Controls:

WB : A549 cells, A431 cells, HEK-293 cells, Jurkat cells, HepG2 cells

IHC : human kidney tissue, human stomach tissue

Background Information

The amino acid selenocysteine (Sec) is incorporated into a small group of proteins that are involved in preventing cellular oxidative stress. The Sec-specific elongation factor eEFec delivers the aminoacylated selenocysteine-tRNA (Sec-tRNA^{Sec}) to the ribosome and suppresses UGA codons that are upstream of Sec Insertion Sequence (SECIS) elements bound by SECIS binding protein 2 (SBP2)[PMID:22992746]. It probably replaces EF-Tu for the insertion of selenocysteine directed by the UGA codon.

Notable Publications

Author	Pubmed ID	Journal	Application
Nina Zeng	33471625	Am J Physiol Cell Physiol	WB

Storage

Storage:

Store at -20°C. Stable for one year after shipment.

Storage Buffer:

PBS with 0.02% sodium azide and 50% glycerol pH 7.3.

Aliquoting is unnecessary for -20°C storage

For technical support and original validation data for this product please contact:

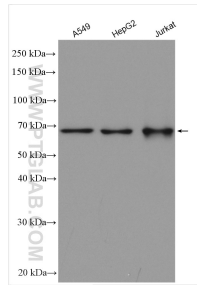
T: 4006900926

E: Proteintech-CN@ptglab.com

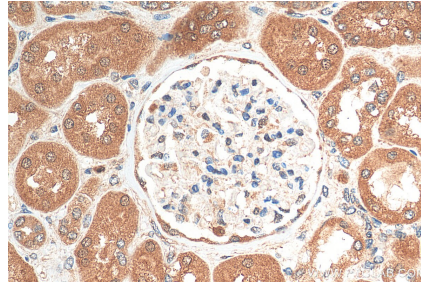
W: ptgcn.com

This product is exclusively available under Proteintech Group brand and is not available to purchase from any other manufacturer.

Selected Validation Data



Various lysates were subjected to SDS PAGE followed by western blot with 10628-1-AP (EEFSEC antibody) at dilution of 1:3000 incubated at room temperature for 1.5 hours.



Immunohistochemical analysis of paraffin-embedded human kidney tissue slide using 10628-1-AP (EEFSEC antibody) at dilution of 1:200 (under 40x lens). Heat mediated antigen retrieval with Tris-EDTA buffer (pH 9.0).