

For Research Use Only

# AP1M2 Polyclonal antibody, PBS Only

Catalog Number: 10618-1-PBS

Featured Product



## Basic Information

Catalog Number:

10618-1-PBS

Size:

1 mg/ml

Source:

Rabbit

Isotype:

IgG

Immunogen Catalog Number:

AG0961

GenBank Accession Number:

BC005021

GeneID (NCBI):

10053

UNIPROT ID:

Q9Y6Q5

Full Name:

adaptor-related protein complex 1,  
mu 2 subunit

Calculated MW:

48 kDa

Observed MW:

50-55 kDa

Purification Method:

Antigen affinity purification

## Applications

Tested Applications:

Species Specificity:

human, mouse, rat

## Background Information

AP1M2 is a subunit of the adaptor complex AP-1. It belongs to the adaptor complexes medium subunit family. Adaptor protein (AP) complexes are cytosolic heterotetramers that mediate the sorting of membrane proteins in the secretory and endocytic pathways. AP-1 is found at the cytoplasmic face of coated vesicles located at the Golgi complex, where it mediates both the recruitment of clathrin to the membrane and the recognition of sorting signals within the cytosolic tails of transmembrane receptors.

## Storage

Storage:

Store at -80°C.

**The product is shipped with ice packs. Upon receipt, store it immediately at -80°C**

Storage Buffer:

PBS Only

For technical support and original validation data for this product please contact:

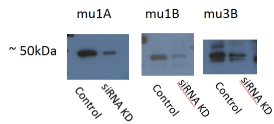
T: 4006900926

E: [Proteintech-CN@ptglab.com](mailto:Proteintech-CN@ptglab.com)

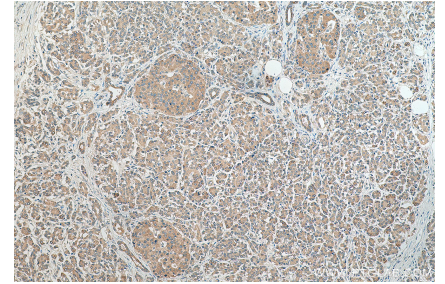
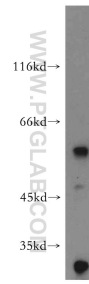
W: [ptgcn.com](http://ptgcn.com)

**This product is exclusively available under Proteintech Group brand and is not available to purchase from any other manufacturer.**

## Selected Validation Data



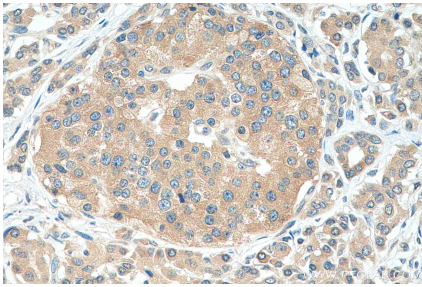
AP1M1 is mu1A: 12112-1-AP,  
 AP1M2 is mu1B: 10618-1-AP,  
 AP3M2 is mu3B: 11925-1-AP,  
 acceptable bands ~50 kDa showing  
 some degree of siRNA  
 knockdown



WB result of AP1M2 antibody (10618-1-AP;1:500) with siRNA cell lysate. This data was developed using the same antibody clone with 10618-1-PBS in a different storage buffer formulation.

mouse colon tissue were subjected to SDS PAGE followed by western blot with 10618-1-AP (AP1M2 antibody) at dilution of 1:500 incubated at room temperature for 1.5 hours. This data was developed using the same antibody clone with 10618-1-PBS in a different storage buffer formulation.

Immunohistochemical analysis of paraffin-embedded human pancreas cancer tissue slide using 10618-1-AP (AP1M2 antibody) at dilution of 1:200 (under 10x lens). Heat mediated antigen retrieval with Tris-EDTA buffer (pH 9.0). This data was developed using the same antibody clone with 10618-1-PBS in a different storage buffer formulation.



Immunohistochemical analysis of paraffin-embedded human pancreas cancer tissue slide using 10618-1-AP (AP1M2 antibody) at dilution of 1:200 (under 40x lens). Heat mediated antigen retrieval with Tris-EDTA buffer (pH 9.0). This data was developed using the same antibody clone with 10618-1-PBS in a different storage buffer formulation.