

For Research Use Only

# EXTL3 Polyclonal antibody

Catalog Number: 10588-1-AP

2 Publications



## Basic Information

Catalog Number:

10588-1-AP

Size:

200 µg/ml

Source:

Rabbit

Isotype:

IgG

Immunogen Catalog Number:

AG0936

GenBank Accession Number:

BC006363

GeneID (NCBI):

2137

UNIPROT ID:

O43909

Full Name:

exostosins (multiple)-like 3

Calculated MW:

105 kDa

Observed MW:

65 kDa

Purification Method:

Antigen affinity purification

Recommended Dilutions:

IHC 1:20-1:200

IF/ICC 1:50-1:500

## Applications

Tested Applications:

IHC, IF/ICC, ELISA

Cited Applications:

WB, IF

Species Specificity:

human

Cited Species:

human, mouse

**Note-IHC: suggested antigen retrieval with TE buffer pH 9.0; (\*) Alternatively, antigen retrieval may be performed with citrate buffer pH 6.0**

Positive Controls:

IHC : human colon cancer tissue,

IF/ICC : HepG2 cells,

## Background Information

Exostosin like glycosyltransferase 3 (EXTL3), also known as RPR, is located at chromosome 8p21.1 and composed of 919 amino acids, making it the longest member of the EXT family (PMID: 35676258). EXTL3 encodes the glycosyltransferases responsible for the biosynthesis of the backbone structure of heparan sulfate (HS) (PMID: 24128412). EXTL3 has been identified as a receptor molecule for regenerating islet-derived (REG) protein ligands, which have been shown to stimulate islet  $\beta$ -cell growth. Mutations in EXTL3 could lead to skeletal dysplasia, developmental delay, and severe immune deficiency (PMID: 28148688). The predicted molecular weight is 105 kDa, but we detected the band at 65 kDa perhaps due to alternative splicing (PMID: 14618397).

## Notable Publications

Author	Pubmed ID	Journal	Application
Ze-Hua Xu	37531162	Ann N Y Acad Sci	WB,IF
Levetan Claresa S CS	19158046	Endocr Pract	WB,IF

## Storage

Storage:

Store at -20°C. Stable for one year after shipment.

Storage Buffer:

PBS with 0.02% sodium azide and 50% glycerol pH 7.3.

Aliquoting is unnecessary for -20°C storage

For technical support and original validation data for this product please contact:

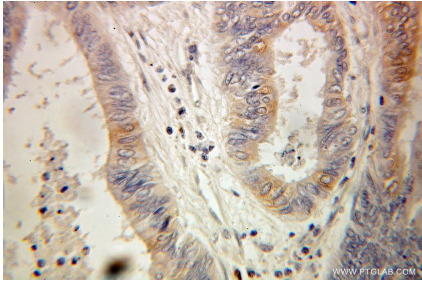
T: 4006900926

E: [Proteintech-CN@ptglab.com](mailto:Proteintech-CN@ptglab.com)

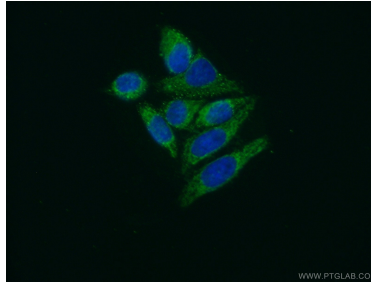
W: [ptgcn.com](http://ptgcn.com)

This product is exclusively available under Proteintech Group brand and is not available to purchase from any other manufacturer.

## Selected Validation Data



Immunohistochemical analysis of paraffin-embedded human colon cancer using 10588-1-AP (EXTL3 antibody) at dilution of 1:100 (under 25x lens).



Immunofluorescent analysis of (10% Formaldehyde) fixed HepG2 cells using 10588-1-AP (EXTL3 antibody) at dilution of 1:50 and Alexa Fluor 488-conjugated AffiniPure Goat Anti-Rabbit IgG(H+L).