

For Research Use Only

INVS Polyclonal antibody

Catalog Number: 10585-1-AP

Featured Product

9 Publications



Basic Information

Catalog Number: 10585-1-AP	GenBank Accession Number: BC006370	Purification Method: Antigen affinity purification
Size: 350 µg/ml	GeneID (NCBI): 27130	Recommended Dilutions: WB 1:200-1:1000 IHC 1:20-1:200 IF 1:10-1:100
Source: Rabbit	UNIPROT ID: Q9Y283	
Isotype: IgG	Full Name: inversin	
Immunogen Catalog Number: AG0934	Calculated MW: 118 kDa, 100 kDa	
	Observed MW: 100-110 kDa	

Applications

Tested Applications:
IF/ICC, IHC, WB, ELISA

Cited Applications:
WB, IF, FC, IHC

Species Specificity:
human, mouse, rat

Cited Species:
human, rat, mouse

Note-IHC: suggested antigen retrieval with TE buffer pH 9.0; (*) Alternatively, antigen retrieval may be performed with citrate buffer pH 6.0

Positive Controls:

WB : MCF-7 cells, K-562 cells, L02 cells, SH-SY5Y cells, mouse skeletal muscle tissue, HepG2 cells, Raji cells, Jurkat cells

IHC : human breast cancer tissue, human hepatocirrhosis tissue

IF : HeLa cells, hTERT-RPE1 cells

Background Information

INVS, short for inversin, plays a role in primary cilia function and involvement in the cell cycle. It is required for normal renal development and establishment of the left-right axis. INVS may be involved in Wnt signaling pathways by acting as a molecular switch between different them. Inhibits the canonical Wnt pathway by targeting cytoplasmic disheveled (DVL1) for degradation by the ubiquitin-proteasome. This suggests that it is required in renal development to oppose the repression of terminal differentiation of tubular epithelial cells by Wnt signaling. This antibody is a rabbit polyclonal antibody raised against part of the N-terminus of human INVS.

Notable Publications

Author	Pubmed ID	Journal	Application
Machteld M Oud	24677454	Am J Med Genet A	IF
Linxi Li	30808893	Cell Death Dis	WB
Ankan Gupta	35143420	JCI Insight	FC

Storage

Storage:

Store at -20°C. Stable for one year after shipment.

Storage Buffer:

PBS with 0.02% sodium azide and 50% glycerol pH 7.3.

Aliquoting is unnecessary for -20°C storage

For technical support and original validation data for this product please contact:

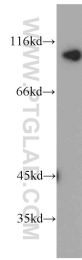
T: 4006900926

E: Proteintech-CN@ptglab.com

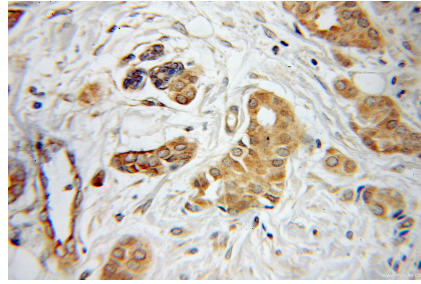
W: ptgcn.com

This product is exclusively available under Proteintech Group brand and is not available to purchase from any other manufacturer.

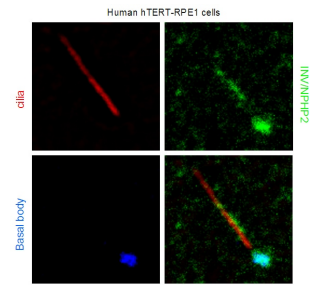
Selected Validation Data



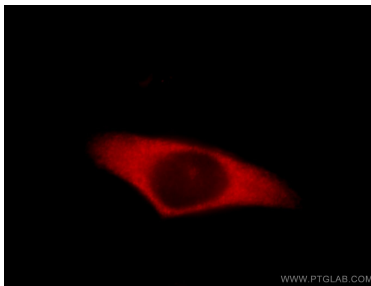
MCF7 cells were subjected to SDS PAGE followed by western blot with 10585-1-AP (INVS antibody) at dilution of 1:100 incubated at room temperature for 1.5 hours.



Immunohistochemical analysis of paraffin-embedded human breast cancer using 10585-1-AP (INVS antibody) at dilution of 1:100 (under 25x lens).



IF result from Dr. Corbit, Kevin. anti-INVS (also named as NPHP2; 10585-1-AP) marks the 'inversin compartment' and basal bodies of Human hTERT-RPE1 cells.



Immunofluorescent analysis of HeLa cells, using INVS antibody 10585-1-AP at 1:25 dilution and Rhodamine-labeled goat anti-rabbit IgG (red).